

2026 SUZUKI GENUINE MARINE PARTS AND ACCESSORIES



2026

SUZUKI GENUINE MARINE PARTS AND ACCESSORIES

THE ULTIMATE OUTBOARD MOTOR



Please read your Owner's Manual carefully. Never operate the boat while under the influence of alcohol or other drugs. Always wear a personal flotation device when boating. Please operate your outboard safely and responsibly.

Suzuki encourages you to operate your boat safely and with respect for the marine environment.

Specifications, appearances, equipment, colors, materials and other items of "SUZUKI" products shown in this catalogue are subject to change by manufacturers at any time without notice and they may vary depending on local conditions or requirements. Some models are not available in some territories. Each model might be discontinued without notice. Please enquire at your local dealer for details of any such changes. Actual body colors might differ from the colors in this brochure.



Suzuki Motor Corporation

300 TAKATSUKA-CHO, CHUO-KU, HAMAMATSU-SHI, SHIZUOKA 432-8611 JAPAN
www.globalsuzuki.com

2026 SUZUKI GENUINE MARINE P&A
Issued: November 2025



Europe Edition



INDEX

SUZUKI ULTIMATE RIGGING SELECTOR (04-05)

04 SUZUKI ULTIMATE RIGGING SELECTOR

OPERATION SYSTEMS (06-47)

06 SUZUKI PRECISION CONTROL (SPC)
16 MECHANICAL REMOTE CONTROL
30 KEYLESS START SYSTEM
32 SUZUKI MULTI-FUNCTION GAUGE (SMG4)
40 ANALOGUE INSTRUMENT
42 STEERING
45 ELECTRICAL PARTS
46 FUEL SYSTEM

SUZUKI PROPELLERS (48-53)

48 WATERGRIP
50 PROPELLER LINE-UP

MAINTAINING YOUR SUZUKI (54-59)

54 CARE & MAINTENANCE ITEM
56 OTHER ITEMS
58 MAINTENANCE KIT

SUZUKI CONNECTED TECHNOLOGIES (60-63)

60 GATEWAY
62 SUZUKI DIAGNOSTIC SYSTEM MOBILE PLUS

APPLICATION CHART (64-65)

SUZUKI ULTIMATE RIGGING SELECTOR

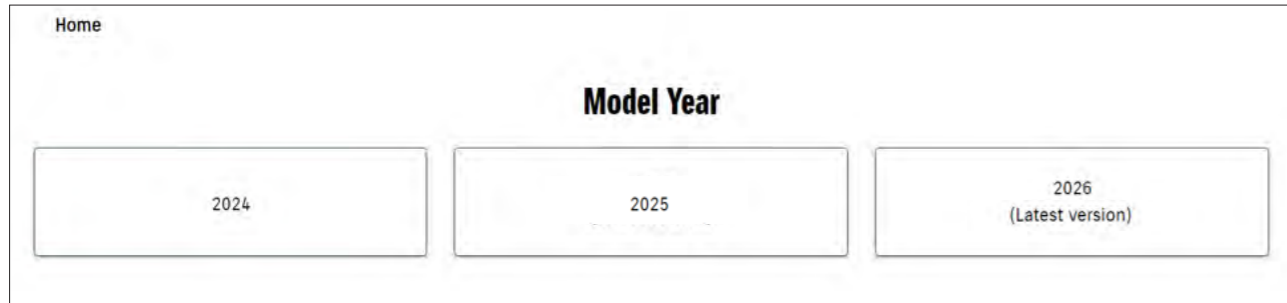
The Suzuki Ultimate Rigging Selector is a website designed to assist users in choosing which Part Number they will need for their desired application. It will shorten user's search time and improve their search accuracy. The Suzuki Ultimate Rigging Selector currently consists of 3 sections: Rigging Matching, Parts List, and PDF.

Website address:

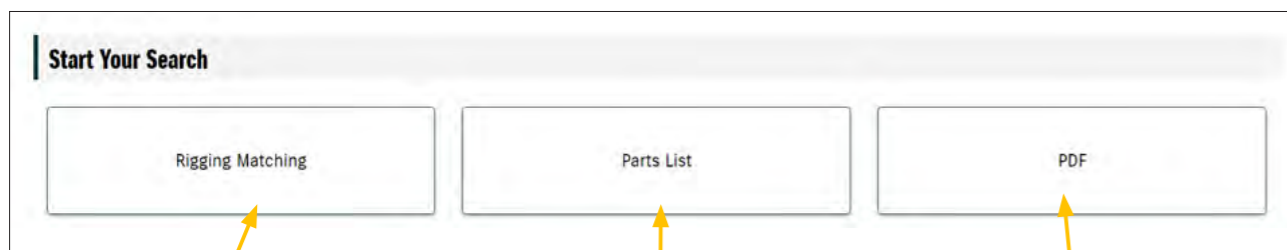
<https://www.globalsuzuki.com/marine/SuzukiUltimateRiggingSelector/>



Click QR code to homepage



The Suzuki Ultimate Rigging Selector currently consists of 3 sections:



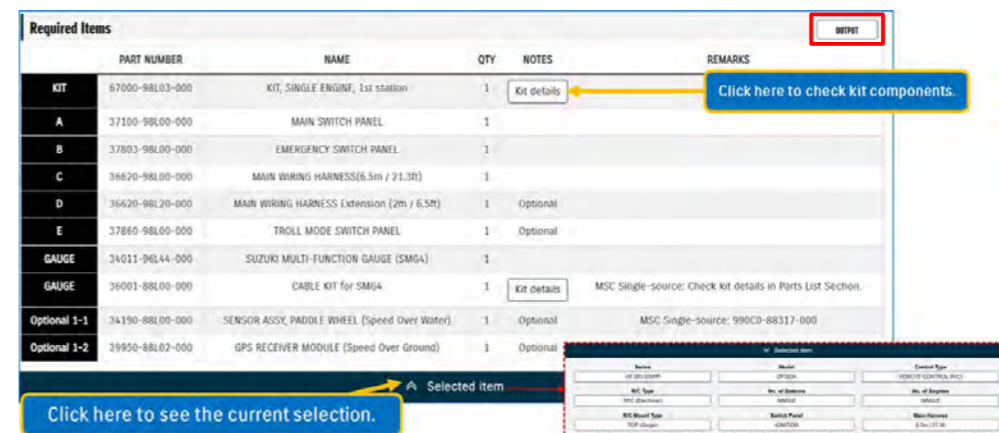
select by engine model or control type

select by kits list

direct to catalogue PDF pages

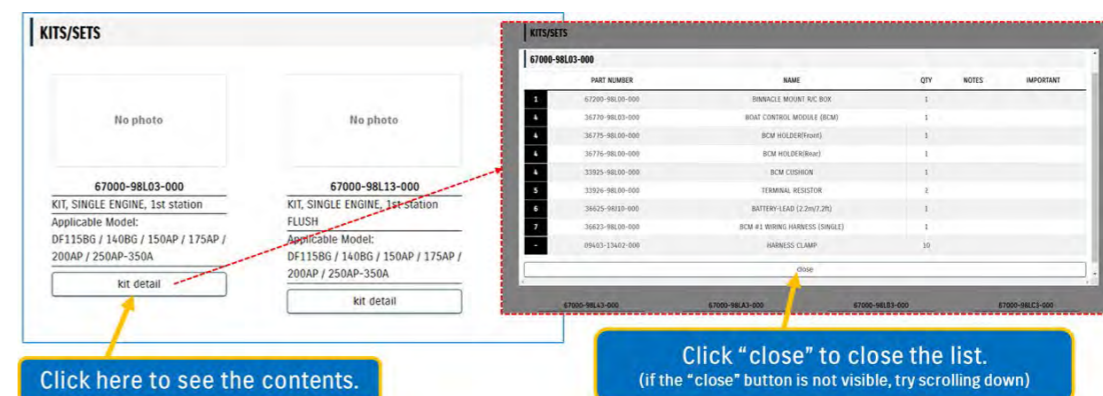
RIGGING MATCHING

Rigging Matching section will assist users in finding the appropriate rigging combinations along with their preference. The system automatically narrows down matching results by only several clicks, and required items will be listed up like below. By clicking "OUTPUT" button, the list will be downloaded as an excel file.



PARTS LIST

Parts List section contains a list of Part Numbers and item photos. For some kits or sets, you can check the components by clicking on "kit detail".



PDF

PDF section is mainly for items that do not fit the format of above two sections. Items in this section are easier to check in a chart.



SUZUKI PRECISION CONTROL (SPC)



Suzuki Precision Control (SPC) is a technologically advanced computer-based control system with electronic wiring (Drive By Wire) that eliminates the source of friction and resistance. SPC processes throttle and shift commands in real time, delivering precise control and seamless operation.

SPC features:

- Control of up to 6 OBM units.
- Automatic Trim available by using SMG4.

Find out more here:



REMOTE CONTROL BOX

- Integrated SELECT and THROTTLE ONLY switches.
- Neutral lock function available on Single Top Mount.
- 1-lever operation for multiple outboards (Dual Top Mount).
- Integrated emergency stop switch (Flush Mount Only)



Single Top Mount



Dual Top Mount



Flush Mount

SWITCH PANEL

- Mounting bolts concealed for a smooth, luxurious finish.
 - 1 action start/stop for multi-installation boats.
(Engines start in order from port to starboard)
- ⇒ See page 10 for a reference of switch panel selection.



COMPONENT PARTS

1 REMOTE CONTROL BOX TOP MOUNT

FLUSH MOUNT



67200-98L30-000
for Single Engine



67200-98L10-000
for Multi-Engine



67200-98L20-000
for Single Engine

2 CONTROL PANEL



37120-98L00-000
for Dual Engine



37120-98L10-000
for Triple Engine



37120-98L20-000
for Quadruple Engine
PORT



37120-98L30-000
for Quadruple Engine,
Quintuple Engine
STBD



37120-98L40-000
for Quintuple Engine
PORT



37120-98L50-000
for Sextuple Engine
PORT



37120-98L60-000
for Sextuple Engine
STBD

3 BUZZER



38500-93J90-000

4 BOAT CONTROL MODULE



36770-98L06-000

BCM HOLDER (F)
BCM HOLDER (R)



36775-98L00-000
(F)
36776-98L00-000
(R)

BCM CUSHION



33925-98L00-000

5 TERMINAL RESISTOR



33926-98L00-000

6 BATTERY LEAD WIRE



36625-98J10-000
2.2m / 7.2ft

36625-98J20-000
6.1m / 20ft

7 BCM #1 WIRING HARNESS



36623-98L00-000
for Single Engine

36623-98L30-000
for Dual or Triple
Engine

36623-98L40-000
for
Quadruple, Quintuple,
and Sextuple Engine

8 HARNESS, EMERGENCY SWITCH EXTENSION



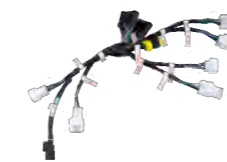
36627-98L10-000
1.5m / 4.9ft

9 SIGNAL CONVERTER UNIT



37140-98L00-000

10 DUAL STATION WIRING HARNESS



36622-98L00-000

11 BCM #2 WIRING HARNESS



36624-98L00-000
for Single Engine

36624-98L10-000
for Dual or Triple
Engine

36624-98L20-000
for Quadruple,
Quintuple, and
Sextuple engines

12 ENGINE WIRING HARNESS



36621-98L00-000



COMPONENT PARTS

A MAIN SWITCH PANEL (KEYLESS START SYSTEM)



37290-98L10-000
Vertical type with
Emergency stop
switch



37290-98L20-000
Horizontal type with
Emergency stop
switch



37290-98L00-000
Ignition only, use with
emergency switch



37803-98L00-000

A MAIN SWITCH PANEL (REGULAR KEY)



37100-98L10-000
Vertical type with
Emergency stop
switch



37100-98L20-000
Horizontal type with
Emergency stop
switch



37100-98L00-000
Ignition only, use with
emergency switch



C MAIN WIRING HARNESS

36620-98L00-000
6.5m / 21.3ft for
control system

36620-98L10-000
9.5m / 31.1ft for
control system

D MAIN WIRING HARNESS EXTENSION

36620-98L20-000
2.0m / 6.5ft for
control system

E TROLL MODE SWITCH PANEL



37860-98L00-000

F R/C BOX HARNESS EXTENSION



36627-98L00-000
1.0m / 3.2ft

G HARNESS COMP, CAN EXT



36627-98L20-000
2.0m / 6.5ft for
triple engine, and
quadruple engine

SWITCH PANEL SELECTION REFERENCE

Several options that may assist you in selecting your preferred choice.

OPTION 1 : Ignition Switch Panel + Emergency Switch Panel



OPTION 2 : Ignition Switch Panel + Flush Mount R/C Box (only)



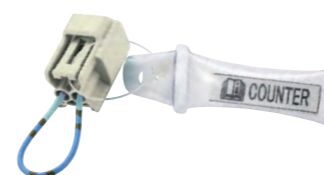
OPTION 3 : Main Switch Panel



*You can find additional information about the Keyless Start System on pages 30 to 31.

EXTRA OPTION

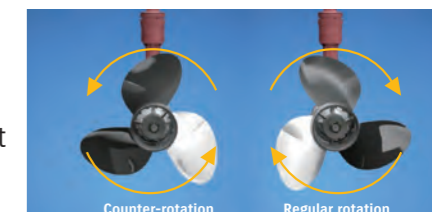
COUNTER SELECT CONNECTOR



36612-98J20-000
Applicable Model DF150AP/175AP/200AP,
DF250AP/300AP
Converts to counter rotation specification.

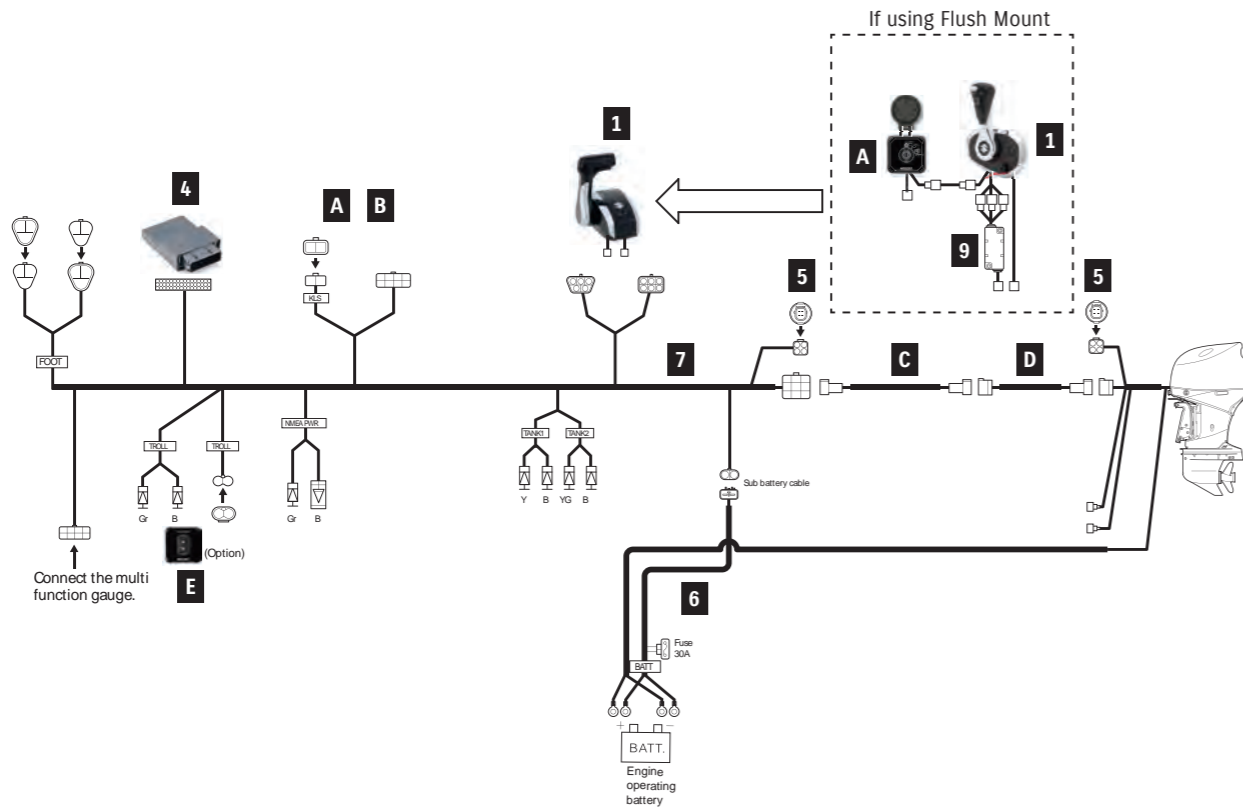


In multi-outboard installations on large boats, a counter-rotation outboard is usually paired with a regular rotation model to help keep the boat travelling on an even keel and in a straight line. Suzuki Selective Rotation eliminates the need to purchase a dedicated counter-rotation outboard by using a special switch that turns a regular rotation outboard into a counter-rotation model.

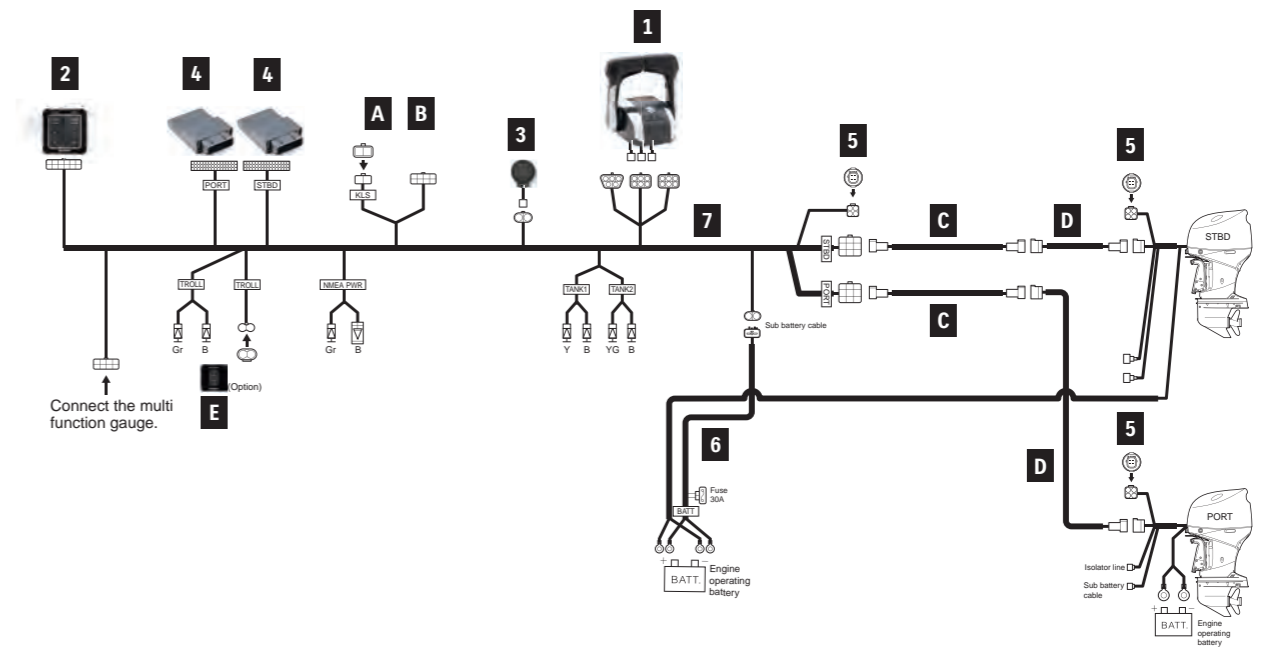


REMOTE-CONTROL KIT

SINGLE ENGINE



DUAL ENGINE



For SINGLE ENGINE			Items Required			
	PART NUMBER	PART NAME	1st STATION		2nd STATION	
			TOP MOUNT	FLUSH MOUNT	TOP MOUNT	FLUSH MOUNT
1	67200-98L30-000	REMOTE CONTROL BOX, SINGLE	1	-	1	-
	67200-98L20-000	FLUSH MOUNT	-	1	-	1
4	36770-98L06-000	BOAT CONTROL MODULE	1	1	1	1
		R/C SUB-ASSEMBLY KIT	67001-98L00-000	67001-98L10-000	67001-98LA0-000	**
3	38500-93J90-000	WARNING BUZZER	-	-	1	1
	09407-08401-000	WARNING BUZZER CLAMP	-	-	1	1
4	36775-98L00-000	BCM HOLDER (F)	1	1	1	1
	36776-98L00-000	BCM HOLDER (R)	1	1	1	1
	33925-98L00-000	BCM CUSHION	1	1	1	1
5	33926-98L00-000	TERMINAL RESISTOR	2	2	-	-
6	36625-98J10-000	BATTERY-LEAD	1	1	-	-
7	36623-98L00-000	BCM #1 WIRING HARNESS	1	1	-	-
8	36627-98L10-000	HARNESS ASSY, EM SWITCH EXT	-	1	-	1
9	37140-98L00-000	UNIT COMP, SIGNAL CONVERTER	-	1	-	1
10	36622-98L00-000	DUAL-STATION WIRING HARNESS	-	-	1	1
11	36624-98L00-000	BCM #2 WIRING HARNESS	-	-	1	1
	- 09403-13402-000	HARNESS CLAMP	10	10	10	10
A	37100-98L00-000	MAIN SWITCH PANEL	1 Select type	37100-98L00-000 or 37290-98L00-000	1 Select type	37290-98L00-000
	37100-98L10-000	MAIN SWITCH PANEL VERTICAL				
	37100-98L20-000	MAIN SWITCH PANEL HORIZONTAL				
	37290-98L00-000	MAIN SWITCH PANEL (Keyless)				
	37290-98L10-000	MAIN SWITCH PANEL VERTICAL (Keyless)				
37290-98L20-000	MAIN SWITCH PANEL HORIZONTAL (Keyless)					
B	37803-98L00-000	EMERGENCY SWITCH PANEL	1*		1*	
C	36620-98L00-000	MAIN WIRING HARNESS 6.5m/21.3ft	1 per station			
	36620-98L10-000	MAIN WIRING HARNESS 9.5m/31.1ft				
D	36620-98L20-000	MAIN WIRING HARNESS EXTENSION 2.0m/6.5ft	Select if necessary			
E	37860-98L00-000	TROLL MODE SWITCH PANEL	Optional			
F	36627-98L00-000	HARNESS COMP, R/CON EXT 1.0m/3.2ft		1		1

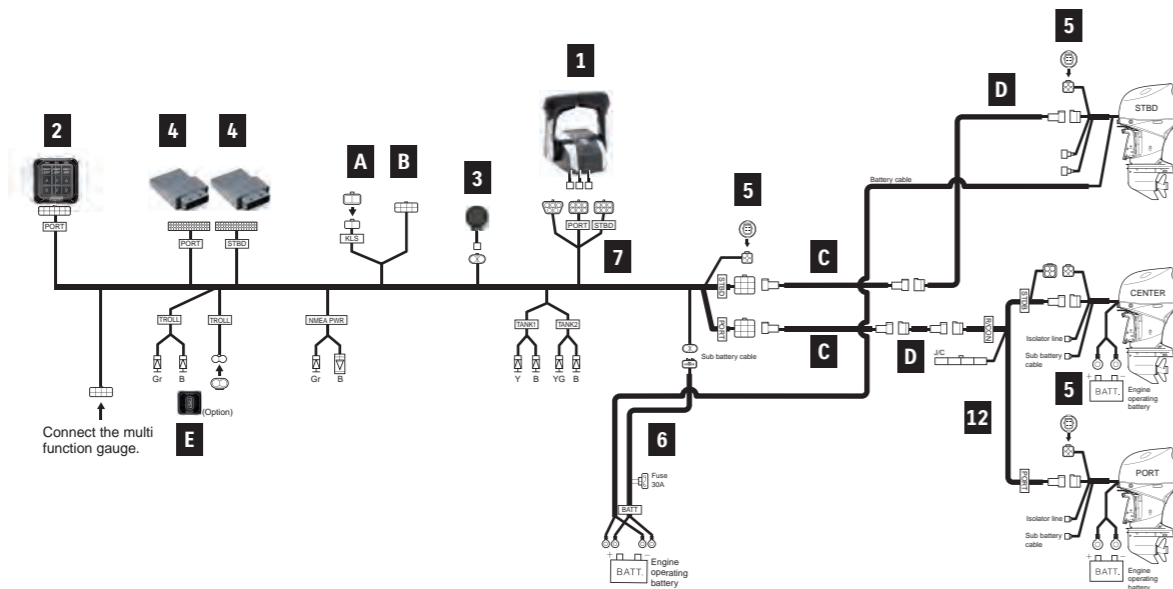
*Required when using 37100-98L00-000 or 37290-98L00-000 with TOP MOUNT.
 **R/C SUB-ASSEMBLY KIT is NOT available. Please purchase each required item separately.

For DUAL ENGINE			Items Required	
	PART NUMBER	PART NAME	1st STATION	2nd STATION
			1	67200-98L10-000
4	36770-98L06-000	BOAT CONTROL MODULE	2	2
		R/C SUB-ASSEMBLY KIT	67001-98L20-000	67001-98LC0-000
2	37120-98L00-000	CONTROL PANEL	1	1
3	38500-93J90-000	WARNING BUZZER	1	2
	09407-08401-000	WARNING BUZZER CLAMP	1	2
4	36775-98L00-000	BCM HOLDER (F)	2	2
	36776-98L00-000	BCM HOLDER (R)	2	2
	33925-98L00-000	BCM CUSHION	2	2
5	33926-98L00-000	TERMINAL RESISTOR	3	-
6	36625-98J10-000	BATTERY-LEAD	1	-
7	36623-98L30-000	BCM #1 WIRING HARNESS	1	-
10	36622-98L00-000	DUAL-STATION WIRING HARNESS	-	1
11	36624-98L10-000	BCM #2 WIRING HARNESS	-	1
	- 09403-13402-000	HARNESS CLAMP	15	10
-	36612-98J20-000	CONNECTOR, COUNTER SELECT	1	2
A	37100-98L00-000	MAIN SWITCH PANEL	1 Select type	1 Select type
	37100-98L10-000	MAIN SWITCH PANEL VERTICAL		
	37100-98L20-000	MAIN SWITCH PANEL HORIZONTAL		
	37290-98L00-000	MAIN SWITCH PANEL (Keyless)		
	37290-98L10-000	MAIN SWITCH PANEL VERTICAL (Keyless)		
37290-98L20-000	MAIN SWITCH PANEL HORIZONTAL (Keyless)			
B	37803-98L00-000	EMERGENCY SWITCH PANEL	1*	1*
C	36620-98L00-000	MAIN WIRING HARNESS 6.5m/21.3ft	2 per station	
	36620-98L10-000	MAIN WIRING HARNESS 9.5m/31.1ft		
D	36620-98L20-000	MAIN WIRING HARNESS EXTENSION 2.0m/6.5ft	Select if necessary	
E	37860-98L00-000	TROLL MODE SWITCH PANEL	Optional	
F	36627-98L00-000	HARNESS COMP, R/CON EXT 1.0m/3.2ft	Select if necessary	

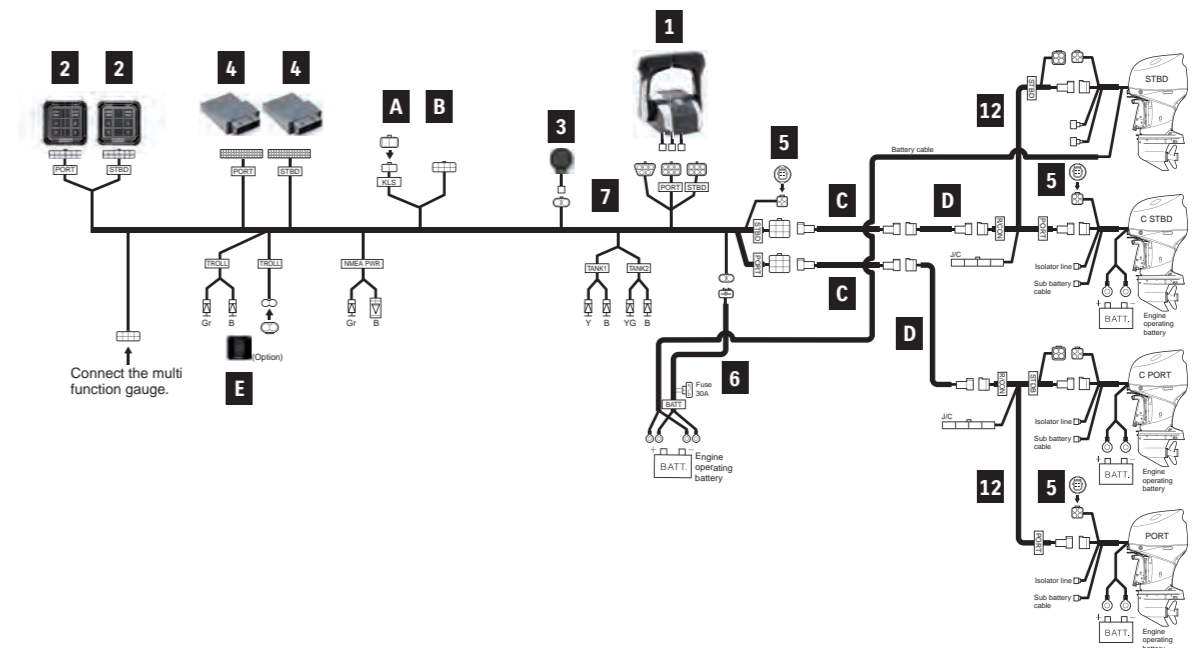
*Required when using 37100-98L00-000 or 37290-98L00-000 with TOP MOUNT.

REMOTE-CONTROL KIT

TRIPLE ENGINE



QUADRUPLE ENGINE



For TRIPLE ENGINE			Items Required	
PART NUMBER	PART NAME		1st STATION	2nd STATION
1	67200-98L10-000	REMOTE CONTROL BOX, DUAL	1	1
4	36770-98L06-000	BOAT CONTROL MODULE	2	2
		R/C SUB-ASSEMBLY KIT	67001-98L30-000	**
2	37120-98L10-000	CONTROL PANEL	1	1
3	38500-93J90-000	WARNING BUZZER	1	2
	09407-08401-000	WARNING BUZZER CLAMP	1	2
4	36775-98L00-000	BCM HOLDER (F)	2	2
	36776-98L00-000	BCM HOLDER (R)	2	2
	33925-98L00-000	BCM CUSHION	2	2
5	33926-98L00-000	TERMINAL RESISTOR	3	-
6	36625-98J10-000	BATTERY-LEAD	1	-
7	36623-98L30-000	BCM #1 WIRING HARNESS	1	-
10	36622-98L00-000	DUAL-STATION WIRING HARNESS	-	1
11	36624-98L10-000	BCM #2 WIRING HARNESS	-	1
12	36621-98L00-000	ENGINE WIRING HARNESS	1	-
-	09403-13402-000	HARNESS CLAMP	18	10
-	36612-98J20-000	CONNECTOR, COUNTER SELECT	1	-
A	37100-98L00-000	MAIN SWITCH PANEL	1 Select type	1 Select type
	37100-98L10-000	MAIN SWITCH PANEL VERTICAL		
	37100-98L20-000	MAIN SWITCH PANEL HORIZONTAL		
	37290-98L00-000	MAIN SWITCH PANEL (Keyless)		
	37290-98L10-000	MAIN SWITCH PANEL VERTICAL (Keyless)		
	37290-98L20-000	MAIN SWITCH PANEL HORIZONTAL (Keyless)		
B	37803-98L00-000	EMERGENCY SWITCH PANEL	1*	1*
C	36620-98L00-000	MAIN WIRING HARNESS 6.5m/21.3ft	2 per station	
	36620-98L10-000	MAIN WIRING HARNESS 9.5m/31.1ft		
D	36620-98L20-000	MAIN WIRING HARNESS EXTENSION 2.0m/6.5ft	Select if necessary	
E	37860-98L00-000	TROLL MODE SWITCH PANEL	Optional	
F	36627-98L00-000	HARNESS COMP, R/CON EXT 1.0m/3.2ft	Select if necessary	
G	36627-98L20-000	HARNESS COMP, CAN EXT 2.0m/6.5ft	Select if necessary	

*Required when using 37100-98L00-000 or 37290-98L00-000 with TOP MOUNT.
 **R/C SUB-ASSEMBLY KIT is NOT available. Please purchase each required item separately.

For QUADRUPLE ENGINE			Items Required**	
PART NUMBER	PART NAME		1st STATION	2nd STATION
1	67200-98L10-000	REMOTE CONTROL BOX, DUAL	1	1
4	36770-98L06-000	BOAT CONTROL MODULE	2	2
2	37120-98L20-000	CONTROL PANEL PORT	1	1
	37120-98L30-000	CONTROL PANEL STBD	1	1
3	38500-93J90-000	WARNING BUZZER	1	2
	09407-08401-000	WARNING BUZZER CLAMP	1	2
4	36775-98L00-000	BCM HOLDER (F)	2	2
	36776-98L00-000	BCM HOLDER (R)	2	2
	33925-98L00-000	BCM CUSHION	2	2
5	33926-98L00-000	TERMINAL RESISTOR	3	-
6	36625-98J10-000	BATTERY-LEAD	1	-
7	36623-98L40-000	BCM #1 WIRING HARNESS	1	-
10	36622-98L00-000	DUAL-STATION WIRING HARNESS	-	1
11	36624-98L20-000	BCM #2 WIRING HARNESS	-	1
12	36621-98L00-000	ENGINE WIRING HARNESS	2	-
-	09403-13402-000	HARNESS CLAMP	20	15
-	36612-98J20-000	CONNECTOR, COUNTER SELECT	2	-
A	37100-98L00-000	MAIN SWITCH PANEL	1 Select type	1 Select type
	37100-98L10-000	MAIN SWITCH PANEL VERTICAL		
	37100-98L20-000	MAIN SWITCH PANEL HORIZONTAL		
	37290-98L00-000	MAIN SWITCH PANEL (Keyless)		
	37290-98L10-000	MAIN SWITCH PANEL VERTICAL (Keyless)		
	37290-98L20-000	MAIN SWITCH PANEL HORIZONTAL (Keyless)		
B	37803-98L00-000	EMERGENCY SWITCH PANEL	1*	1*
C	36620-98L00-000	MAIN WIRING HARNESS 6.5m/21.3ft	2 per station	
	36620-98L10-000	MAIN WIRING HARNESS 9.5m/31.1ft		
D	36620-98L20-000	MAIN WIRING HARNESS EXTENSION 2.0m/6.5ft	Select if necessary	
E	37860-98L00-000	TROLL MODE SWITCH PANEL	Optional	
F	36627-98L00-000	HARNESS COMP, R/CON EXT 1.0m/3.2ft	Select if necessary	
G	36627-98L20-000	HARNESS COMP, CAN EXT 2.0m/6.5ft	Select if necessary	

*Required when using 37100-98L00-000 or 37290-98L00-000 with TOP MOUNT.
 **R/C SUB-ASSEMBLY KIT is NOT available. Please purchase each required item separately.

MECHANICAL REMOTE CONTROL



Mechanical Remote Control Boxes are designed for longevity and ease of use. To fit a wide range of Suzuki Outboard Motors, we offer Single and Dual Top Mount Remote Control Boxes, Flush Mount, Side Mount options. Additionally, a variety of parts and accessories are also available.

REMOTE CONTROL BOX

Single Top Mount*



Dual Top Mount



Flush Mount



Side Mount

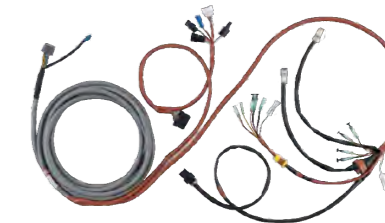


*The Single Top Mount Remote Control Box is equipped with a neutral lock switch to prevent accidental operation.

MAIN WIRING HARNESS (CAN connection)

The Main Wiring Hareness (CAN connection) provides mechanically controlled Suzuki outboard engines with access to the Automatic Trim and Keyless Start System. Please refer to page 19 to check applicable models and available harness lengths.

36620-93JA0/B0/C0



TWO OPTIONAL FEATURES AVAILABLE with CAN HARNESS

KEYLESS START SYSTEM

Applicable Model DF70A and above



This system allows you to start multiple engines by placing key-fob nearby.

ADVANTAGE

- Provides high security.
- No ignition key is necessary.

*Available with SMG4

- One push Start & Stop for up to 6 outboard motors.
- Waterproof Float Key Fob.
- Security support with immobilizer.



Note:

- If using the new Keyless Start System, please ensure to use the new switch panels.
- The Keyless Start System is only available in limited regions. If you are not sure about your market, please check with your local dealer.

AUTOMATIC TRIM

Applicable Model DF100C and above



The Automatic Trim adjust trim angle automatically depending on the engine RPM without your control.

ADVANTAGE

Helps to keep the appropriate trim angle and contribute to achieve faster top speed and better fuel efficiency.

*Available with SMG4

Functions available using the CAN Harness

	DF40A-60A	DF70A-100B	DF100C-140B	DF150A-200A	DF200-250
CAN Connection	✓	✓	✓	✓	✓
Automatic Trim	X	X	✓	✓	✓
Keyless Start System	X	✓	✓	✓	✓

COMPONENT OF MECHANICAL REMOTE CONTROL

1 REMOTE CONTROL BOX TOP MOUNT

FLUSH MOUNT



67200-88L20-000
for Single Engine
Applicable Model DF8A-250



67200-88L13-000
for Dual Engine
Applicable Model DF70A-250



67200-93J34-000
for Single Engine
Applicable Model DF8A-250

SIDE MOUNT REMOTE CONTROL BOX

TWIN REMOTE-CONTROL ATTACHMENT KIT



67200-91J32-000
for Single Engine. Without IGN SW
Applicable Model DF4A-6A

67200-94J40-000
for Single Engine. With warning buzzer without PTT switch
Applicable Model DF8A-30A

67200-93J70-000
for Single Engine. With PTT switch
Applicable Model DF9.9B-250
CAN Harness required for using 67200-93J70-000.



67140-95601-000
Applicable Model DF9.9B-30A/
100C-250

2 MAIN SWITCH PANEL (REGULAR KEY)



37100-98L10-000
Vertical type With
Emergency stop switch
Applicable Model DF9.9B-250



37100-98L20-000
Horizontal type With
Emergency stop switch
Applicable Model DF9.9B-250



37100-98L30-000
Dual Ignition With
Emergency stop switch
Applicable Model DF9.9B-250



37100-98L00-000
Ignition switch only
Applicable Model DF9.9B-250

2 MAIN SWITCH PANEL (KEYLESS START SYSTEM WITH CAN CONNECTION)



37290-98L10-000
Vertical type with
Emergency stop
switch



37290-98L20-000
Horizontal type with
Emergency stop
switch



37290-98L00-000
Ignition switch only



37803-98L00-000

3 EMERGENCY SWITCH PANEL

4 MAIN WIRING HARNESS (CAN CONNECTION)

MAIN WIRING HARNESS EXTENSION



36620-93JA0-000
6.5m/21.3ft for Control system
Applicable Model DF40A-250

36620-93JB0-000
5.0m/16.4ft for Control system
Applicable Model DF40A-250

36620-93JC0-000
8.0m/26.2ft for Control system
Applicable Model DF40A-250



36620-93JD0-000
Extension, 2.0m/6.5ft
Applicable Model DF40A-250

36620-93JE0-000
Extension, 3.0m/9.8ft
Applicable Model DF40A-250

4 MAIN WIRING HARNESS (NON-CAN CONNECTION)

MAIN WIRING HARNESS EXTENSION



36620-93J70-000
6.5m/21.3ft for Control system
Applicable Model DF40A-250

36620-93J80-000
5.0m/16.4ft for Control system
Applicable Model DF40A-250

36620-93J90-000
8.0m/26.2ft for Control system
Applicable Model DF40A-250

36620-89L10-000
6.5m/21.3ft for Control system
Applicable Model DF8A/DF9.9B/
15A/20A

36620-94L20-000
6.5m/21.3ft for Control system
Applicable Model DF25A/30A

36620-93J12-000
2.0m/6.5ft for Control system
Applicable Model DF8A/
DF9.9B-250

36620-93J42-000
3.0m/9.8ft for Control system
Applicable Model DF8A/
DF9.9B-250

5 REMOTE-CONTROL CABLE (THROTTLE AND SHIFT CABLE)



67320-93JA0-000
3.40 m / 11.0 ft
Applicable Model DF4A-250

67320-93J20-000
3.66 m / 12.0 ft
Applicable Model DF4A-250

67320-93JB0-000
4.00 m / 13.0 ft
Applicable Model DF4A-250

67320-93J00-000
2.44 m / 8.0 ft
Applicable Model DF4A-250

67320-93J30-000
4.27 m / 14.0 ft
Applicable Model DF4A-250

67320-93J90-000
2.70 m / 9.0 ft
Applicable Model DF4A-250

67320-93JC0-000
4.60 m / 15.0 ft
Applicable Model DF4A-250

67320-93J10-000
3.05 m / 10.0 ft
Applicable Model DF4A-250

67320-93J40-000
4.88 m / 16.0 ft
Applicable Model DF4A-250

67320-93JD0-000
5.20 m / 17.0 ft
Applicable Model DF4A-250

67320-93J50-000
5.49 m / 18.0 ft
Applicable Model DF4A-250

67320-93J60-000
6.10 m / 20.0 ft
Applicable Model DF4A-250

67320-93J70-000
6.71 m / 22.0 ft
Applicable Model DF4A-250

67320-93J80-000
7.32 m / 24.0 ft
Applicable Model DF4A-250

6 PTT SWITCH PANEL



37805-88L00-000
Applicable Model DF40A-250

BATTERY LEAD



36625-93J10-000
6.7 m / 21.9ft
Applicable Model DF100C-200A/
200-250

36625-93J01-000
3.9 m / 12.7ft
Applicable Model DF100C-200A/
200-250

SPACER KIT



67500-88L00-000
for Single Top-mount type
Applicable Model DF8A-250



67500-88L10-000
for Dual Top-mount type
Applicable Model DF70A-250

7 KEYLESS CONTROL UNIT



37171-98L02-000
433MHz for CAN connection

CUSHION



32851-93J00-000

10 RELAY ASSY, KLS



38860-96L01-000

KEYLESS PARTS HOLDER



37173-96L10-000

8 HARNESS ASSY, KEYLESS CONTROL



36623-98LA0-000
for CAN connection

11 KEY FOB



37180-96L00-000
433MHz

HOLDER



32980-38F00-000

9 BUZZER ASSY



38500-93J90-000

12 HARNESS ASSY, KLS DUAL ENGINE



36621-98L31-000

13 WIRE COMP, CAN



36661-96L40-000

REMOTE CONTROL ATTACHMENT KIT

Converts ME model to REMOTE-CONTROL model.



67130-94L30-000
Applicable Model DF25A/30A
(Year 2023~)

67130-94L20-000
Applicable Model DF25ATH/30ATH
(Year 2023~)

67130-99J02-000
Requires CLAMP BRACKET SET
(41100-99JL0-YAY)
Applicable Model DF8A/9.9A

67101-97L00-000
Applicable Model DF4A-6A

67130-89L40-000
Applicable Model DF9.9B/15A/20A

CLAMP BRACKET SET

No photo available

41100-99JL0-YAY
Required to install
67130-99J02
Applicable Model DF8A/9.9A



EXTRA OPTION

RIGGING TUBE



990C0-20010-000
Applicable Model DF70A-350A
*Connect to the hose adapter
equipped on the engine

TROLL MODE SWITCH PANEL



37860-98L00-000
Applicable Model DF40A-350A
Activates SUZUKI Troll Mode
System and controls RPM
from idling engine speed up to
1200rpm at every 50rpm.



SUZUKI TROLL MODE SYSTEM

Troll Mode Switch:

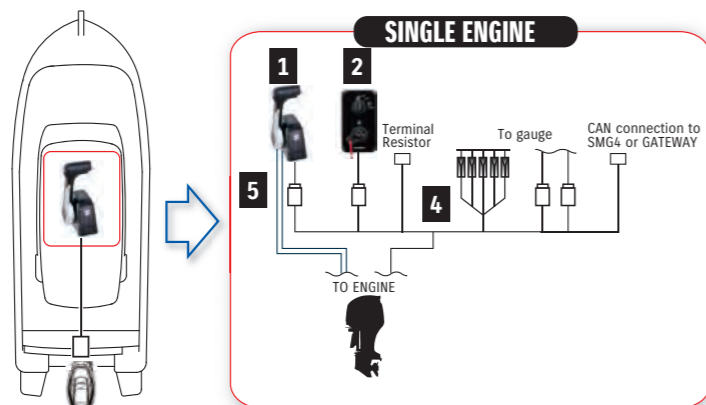
An option for Remote Control models from DF40A and over, this system allows the user to adjust engine speed in 50rpm increments, giving highly precise control at low revs. With its own tachometer and control switch, it works alongside our multi-function gauges and analogue gauges.

Tiller Handle Models from DF40A and over except DF90AWQH have Suzuki Troll Mode System as standard equipment.

SINGLE ENGINE with CAN Connection (REGULAR KEY)

For SINGLE ENGINE (SINGLE STATION, REGULAR KEY)				Required Quantity		
PART NUMBER	PART NAME	LENGTH	TOP-MOUNT	FLUSH-MOUNT	SIDE-MOUNT	
1	67200-88L20-000	REMOTE CONTROL BOX,SINGLE	1	-	-	
	67200-93J34-000	FLUSH MOUNT	-	1	-	
	67200-93J70-000	SIDE MOUNT	-	-	1	
2	37100-98L10-000	PANEL ASSY, MAIN SWITCH VERTICAL	1	1	-	
	37100-98L20-000	PANEL ASSY, MAIN SWITCH HORIZONTAL				
	37100-98L00-000	MAIN SWITCH PANEL				
3	37803-98L00-000	EMERGENCY SWITCH PANEL	*1	*1	-	
4	36620-93JA0-000	MAIN WIRING HARNESS	1	1	1	
	36620-93JB0-000	MAIN WIRING HARNESS				
	36620-93JC0-000	MAIN WIRING HARNESS				
	36620-93JD0-000	WIRE ASSY, REMOTE CONTROL EXT				
	36620-93JE0-000	WIRE ASSY, REMOTE CONTROL EXT				
5	67320-93J00-000	REMOTE CONTROL CABLES	Optional	Optional	Optional	
	67320-93J90-000					
	67320-93J10-000					
	67320-93JA0-000					
	67320-93J20-000					
	67320-93JB0-000					
	67320-93J30-000					
	67320-93JC0-000					
	67320-93J40-000					
	67320-93JD0-000					
	67320-93J50-000					
	67320-93J60-000					
67320-93J70-000						
67320-93J80-000	Select two					

*Only if using 37100-98L00-000



For KEYLESS START SYSTEM

For SINGLE ENGINE (SINGLE STATION with KEYLESS SYSTEM)				Required Quantity	
PART NUMBER	PART NAME	LENGTH	TOP-MOUNT	FLUSH-MOUNT	
1	67200-88L20-000	REMOTE CONTROL BOX,SINGLE	1	-	
	67200-93J34-000	FLUSH MOUNT	-	1	
2	37290-98L10-000	PANEL ASSY, MAIN SWITCH VERTICAL	1		
	37290-98L20-000	PANEL ASSY, MAIN SWITCH HORIZONTAL			
37290-98L00-000	MAIN SWITCH PANEL				
3	37803-98L00-000	EMERGENCY SWITCH PANEL	*1		
4	36620-93JA0-000	MAIN WIRING HARNESS	1		
	36620-93JB0-000	MAIN WIRING HARNESS			
	36620-93JC0-000	MAIN WIRING HARNESS			
	36620-93JD0-000	WIRE ASSY, REMOTE CONTROL EXT			
	36620-93JE0-000	WIRE ASSY, REMOTE CONTROL EXT			
5	67320-93J00-000	REMOTE CONTROL CABLES	Optional	Optional	
	67320-93J90-000				
	67320-93J10-000				
	67320-93JA0-000				
	67320-93J20-000				
	67320-93JB0-000				
	67320-93J30-000				
	67320-93JC0-000				
	67320-93J40-000				
	67320-93JD0-000				
	67320-93J50-000				
	67320-93J60-000				
67320-93J70-000					
67320-93J80-000	Select two				
7	37171-98L02-000	CONTROLLER ASSY, KLS 433	1		
8	36623-98LA0-000	HARNESS ASSY, KLS CONT	1		
9	38500-93J90-000	BUZZER ASSY	1		
10	38860-96L01-000	RELAY ASSY, KLS	1		
11	37180-96L00-000	KEY FOB 433 MHz	2		

*Only if using 37290-98L00-000

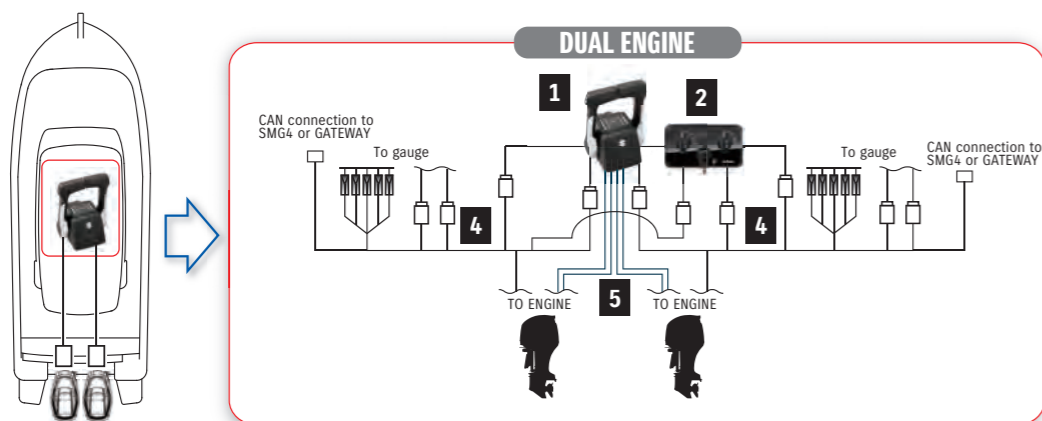


DUAL ENGINE with CAN Connection (REGULAR KEY)

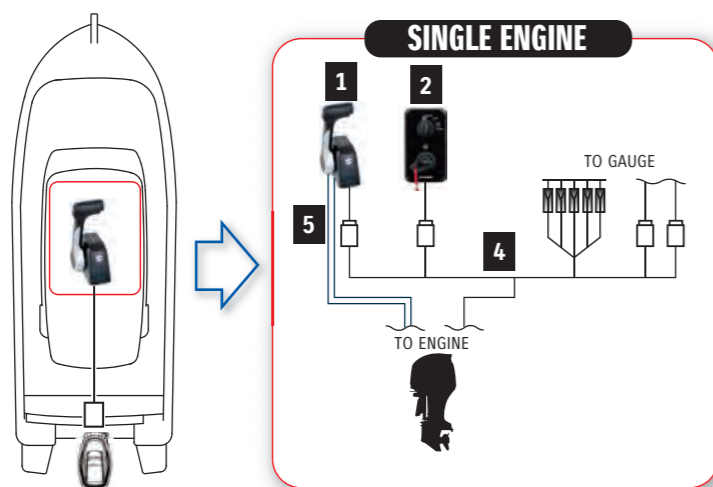
For DUAL ENGINE (SINGLE STATION, REGULAR KEY)				Required Quantity	
	PART NUMBER	PART NAME	LENGTH	TOP MOUNT	SIDE MOUNT
1	67200-88L13-000	REMOTE CONTROL BOX, DUAL		1	-
	67200-93J70-000	SIDE MOUNT		-	2
2	37100-98L30-000	PANEL ASSY, MAIN SWITCH MULTI		1	-
4	36620-93JA0-000	MAIN WIRING HARNESS	6.5m / 21.3ft	2	2
	36620-93JB0-000	MAIN WIRING HARNESS	5.0m / 16.4ft		
	36620-93JC0-000	MAIN WIRING HARNESS	8.0m / 26.2ft		
	36620-93JD0-000	WIRE ASSY, REMOTE CONTROL EXT	2.0m / 6.5ft	Optional	Optional
	36620-93JE0-000	WIRE ASSY, REMOTE CONTROL EXT	3.0m / 9.8ft		
5	67320-93J00-000	REMOTE CONTROL CABLES	2.4m / 8.0ft	Select four	
	67320-93J90-000		2.7m / 9.0ft		
	67320-93J10-000		3.1m / 10.0ft		
	67320-93JA0-000		3.4m / 11.0ft		
	67320-93J20-000		3.7m / 12.0ft		
	67320-93JB0-000		4.0m / 13.0ft		
	67320-93J30-000		4.2m / 14.0ft		
	67320-93JC0-000		4.6m / 15.0ft		
	67320-93J40-000		4.8m / 16.0ft		
	67320-93JD0-000		5.2m / 17.0ft		
	67320-93J50-000		5.4m / 18.0ft		
67320-93J60-000	6.1m / 20.0ft				
67320-93J70-000	6.7m / 22.0ft				
67320-93J80-000	7.3m / 24.0ft				
13	36661-96L40-000	WIRE COMP, CAN		1	1

For KEYLESS START SYSTEM

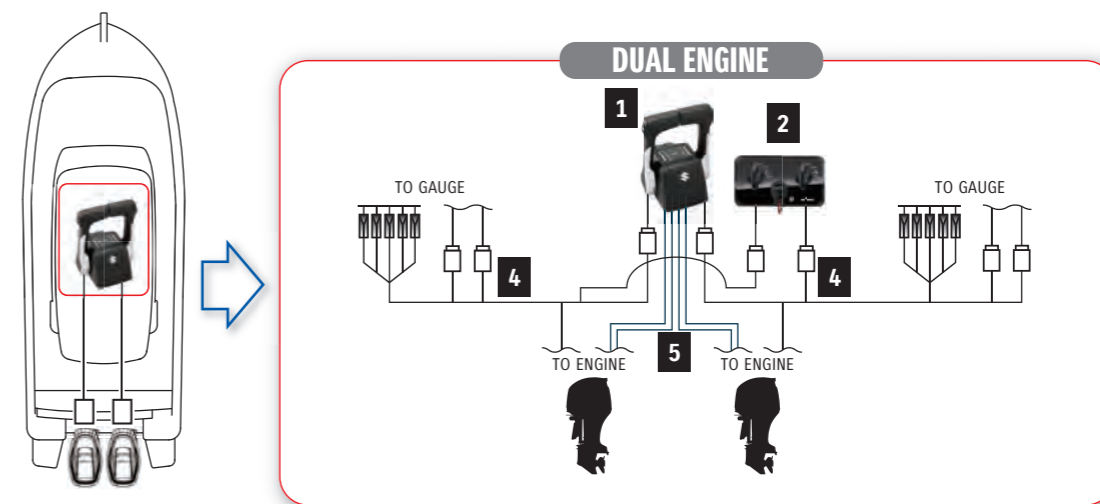
For DUAL ENGINE (SINGLE STATION with KEYLESS SYSTEM)				Required Quantity	
	PART NUMBER	PART NAME	LENGTH	TOP MOUNT	SIDE MOUNT
1	67200-88L13-000	REMOTE CONTROL BOX, DUAL		1	-
2	37290-98L00-000	PANEL ASSY, ENG START SW		-	2
	37803-98L00-000	PANEL ASSY, EMERGENCY SW		-	1
4	36620-93JA0-000	MAIN WIRING HARNESS	6.5m / 21.3ft	2	2
	36620-93JB0-000	MAIN WIRING HARNESS	5.0m / 16.4ft		
	36620-93JC0-000	MAIN WIRING HARNESS	8.0m / 26.2ft		
	36620-93JD0-000	WIRE ASSY, REMOTE CONTROL EXT	2.0m / 6.5ft	Optional	Optional
	36620-93JE0-000	WIRE ASSY, REMOTE CONTROL EXT	3.0m / 9.8ft		
5	67320-93J00-000	REMOTE CONTROL CABLES	2.4m / 8.0ft	Select four	
	67320-93J90-000		2.7m / 9.0ft		
	67320-93J10-000		3.1m / 10.0ft		
	67320-93JA0-000		3.4m / 11.0ft		
	67320-93J20-000		3.7m / 12.0ft		
	67320-93JB0-000		4.0m / 13.0ft		
	67320-93J30-000		4.2m / 14.0ft		
	67320-93JC0-000		4.6m / 15.0ft		
	67320-93J40-000		4.8m / 16.0ft		
	67320-93JD0-000		5.2m / 17.0ft		
	67320-93J50-000		5.4m / 18.0ft		
67320-93J60-000	6.1m / 20.0ft				
67320-93J70-000	6.7m / 22.0ft				
67320-93J80-000	7.3m / 24.0ft				
7	37171-98L02-000	CONTROLLER ASSY, KLS 433		1	
8	36623-98LA0-000	HARNESS ASSY, KLS CONT		1	
9	38500-93J90-000	BUZZER ASSY		2	
10	38860-96L01-000	RELAY ASSY, KLS		1	
11	37180-96L00-000	KEY FOB 433 MHz		2	
12	36621-98L31-000	HARNESS ASSY, KLS DUAL ENG		1	



SINGLE ENGINE with Non-CAN Connection



DUAL ENGINE with Non-CAN Connection



For SINGLE ENGINE (Single Station)				Required Quantity		
PART NUMBER	PART NAME	LENGTH		Top-MOUNT	FLUSH-MOUNT	SIDE-MOUNT
1	67200-88L20-000 67200-93J34-000 67200-93J70-000	REMOTE CONTROL BOX, SINGLE FLUSH MOUNT SIDE MOUNT		1 - -	- 1 -	- - 1
2	37100-98L00-000 37100-98L10-000 37100-98L20-000	MAIN SWITCH PANEL IG SWITCH ONLY MAIN SWITCH PANEL VERTICAL MAIN SWITCH PANEL HORIZONTAL		1 (Select type)		-
3	37803-98L00-000	PANEL ASSY, EMERGENCY SWITCH		*1		-
4	36620-93J70-000 36620-93J80-000 36620-93J90-000 36620-93J12-000 36620-93J41-000	MAIN WIRING HARNESS MAIN WIRING HARNESS EXTENSION	6.5m / 21.3ft 5.0m / 16.4ft 8.0m / 26.2ft 2.0m / 6.5ft 3.0m / 9.8ft	Select one		
5	67320-93J00-000 67320-93J90-000 67320-93J10-000 67320-93JA0-000 67320-93J20-000 67320-93JB0-000 67320-93J30-000 67320-93JC0-000 67320-93J40-000 67320-93JD0-000 67320-93J50-000 67320-93J60-000 67320-93J70-000 67320-93J80-000	REMOTE CONTROL CABLES	2.4m / 8.0ft 2.7m / 9.0ft 3.1m / 10.0ft 3.4m / 11.0ft 3.7m / 12.0ft 4.0m / 13.0ft 4.2m / 14.0ft 4.6m / 15.0ft 4.8m / 16.0ft 5.2m / 17.0ft 5.4m / 18.0ft 6.1m / 20.0ft 6.7m / 22.0ft 7.3m / 24.0ft	Optional. Select if necessary.		Select two

*Only needed if using 37100-98L00-000

For DUAL ENGINE (Single station)				Required Qty	
PART NUMBER	PART NAME	LENGTH	Qty	Single Station	
1	67200-88L13-000	REMOTE CONTROL BOX, DUAL	1	1	
2	37100-98L00-000 37100-98L30-000	MAIN SWITCH PANEL IG SWITCH ONLY DUAL IGNITION WITH E/S SWITCH	2 1	Select -98L00 OR -98L30	
3	37803-98L00-000	PANEL ASSY, EMERGENCY SWITCH	*1	*1	
4	36620-93J70-000 36620-93J80-000 36620-93J90-000 36620-93J12-000 36620-93J42-000	MAIN WIRING HARNESS MAIN WIRING HARNESS EXTENSION	6.5m / 21.3ft 5.0m / 16.4ft 8.0m / 26.2ft 2.0m / 6.5ft 3.0m / 9.8ft	Select two Optional	2 -
5	67320-93J00-000 67320-93J90-000 67320-93J10-000 67320-93JA0-000 67320-93J20-000 67320-93JB0-000 67320-93J30-000 67320-93JC0-000 67320-93J40-000 67320-93JD0-000 67320-93J50-000 67320-93J60-000 67320-93J70-000 67320-93J80-000	REMOTE CONTROL CABLES	2.4m / 8.0ft 2.7m / 9.0ft 3.1m / 10.0ft 3.4m / 11.0ft 3.7m / 12.0ft 4.0m / 13.0ft 4.2m / 14.0ft 4.6m / 15.0ft 4.8m / 16.0ft 5.2m / 17.0ft 5.4m / 18.0ft 6.1m / 20.0ft 6.7m / 22.0ft 7.3m / 24.0ft	Select four	4

*Only needed if using 37100-98L00-000

COMPONENT PARTS

1 MAIN SWITCH PANEL VERTICAL	MAIN SWITCH PANEL HORIZONTAL	MAIN SWITCH PANEL	2 EMERGENCY SWITCH PANEL
			
37290-98L10-000	37290-98L20-000	37290-98L00-000	37803-98L00-000
3 BUZZER	4 KEYLESS CONTROL UNIT	5 KEY FOB	6 KEYLESS CONTROL HARNESS
			
38500-93J90-000	37171-98L02-000 433MHz	37180-96L00-000 433MHz	36623-98LA0-000 used when using 37290-98L00-000
7 KEYLESS RELAY ASSY	8 KEYLESS PARTS HOLDER	9 HOLDER	10 CUSHION
			
38860-96L01-000	37173-96L10-000	32980-38F00-000	32851-93J00-000

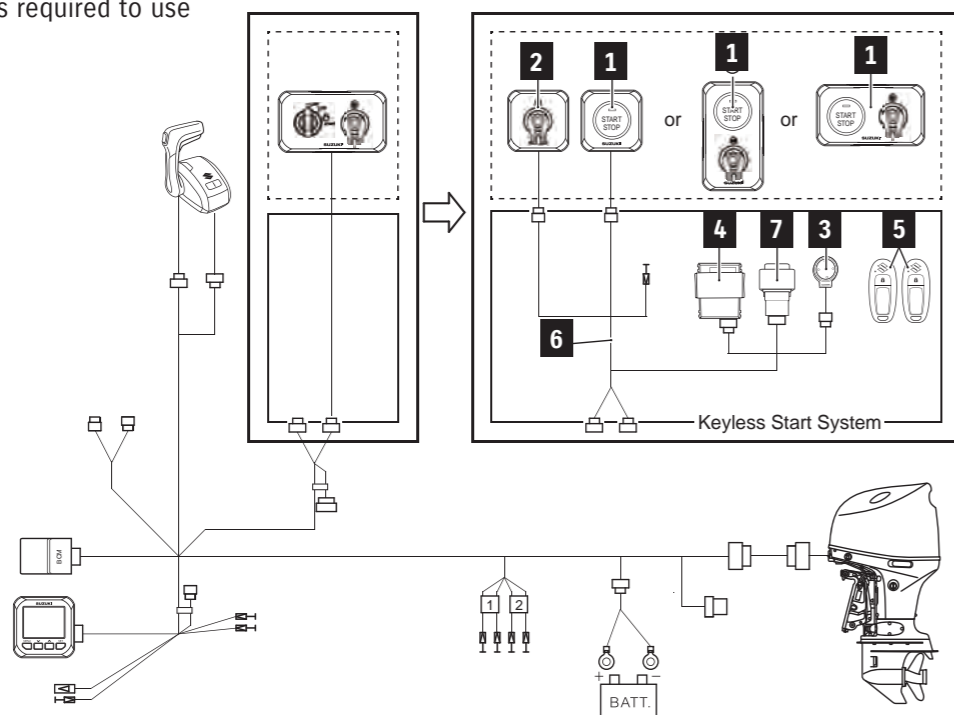
KEYLESS START SYSTEM



Start your engine effortlessly with a secure access code transmitted from the key fob. One-push Start/Stop enables you to control up to 6 engines, no ignition key required.

KEYLESS START SYSTEM for Suzuki Precision Control or Mechanical Remote Control with CAN Connection

*SMG4 is required to use



	PART NUMBER	PART NAME	KIT	Total Required Quantity Per Boat
			CONTROLLER SET	
			37105-98L08-000	
1	37290-98L00-000	MAIN SWITCH PANEL	-	1
	37290-98L10-000	MAIN SWITCH PANEL VERTICAL	-	1
	37290-98L20-000	MAIN SWITCH PANEL HORIZONTAL	-	1
2	37803-98L00-000	EMERGENCY SWITCH PANEL	-	1*
3	38500-93J90-000	BUZZER	1	1
4	37171-98L02-000	KEYLESS CONTROL UNIT	1	1
5	37180-96L00-000	KEY FOB	2	2
6	36623-98LA0-000	KEYLESS CONTROL HARNESS	1	1
7	38860-96L01-000	RELAY ASSY, KLS	1	1
8	37173-96L10-000	HOLDER, KLS PARTS	1	1
9	32980-38F00-000	HOLDER	1	1
10	32851-93J00-000	CUSHION	1	1
-	09407-14407-000	CLAMP, KLS HARNESS	1	1
-	37117-96L00-000	DECAL, KLS	2	-

*Used when using 37290-98L00-000.

DISPLAY MODE

DIGITAL TACHO & SPEED MODE



ANALOGUE SPEED MODE



*Night mode screen

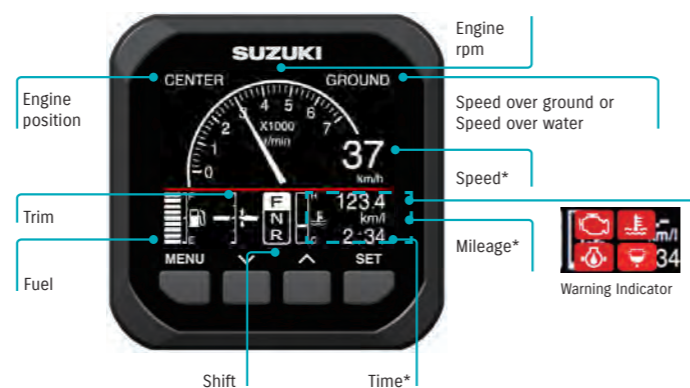
FUEL MODE



SUZUKI MULTI-FUNCTION GAUGE (SMG4)

The Suzuki Multi-function Gauge (SMG4) shows all the necessary information on one, user-friendly screen. Users can view a wide range of important information, including engine rpm, speed and trim angle, engine temp and fuel economy in and total fuel flow for multiple engine installations. The SMG4 also shows alerts from the engine's sensors and warning systems.

ANALOGUE TACHO & SPEED MODE



TACHO MODE



- Fuel flow (instantaneous)
- Mileage* (instantaneous and average)
- Trip time, Trip distance*
- Engine hour, Voltage, Water temp and more...

TROLL MODE FUNCTION



- Allows you to control your troll mode from the Multi-Function Gauge

This function is available from year 2019 models. Can only be used by models which are adapted to troll mode.

* Speed sensor or GPS module required.

	GPS Module	Speed sensor
Speed	✓	✓
Mileage	✓	✓
Trip distance	✓	✓
Time	✓	N/A

FEATURE

MULTILINGUAL MENU

SMG4 is available in 13 languages: English, French, Italian, German, Spanish, Swedish, Norwegian, Finnish, Dutch, Portuguese, Danish, Russian, Japanese.



AUTOMATIC TRIM

Automatically adjusts trim angle with OBM RPM

Remark: Automatic Trim function are only available for DF100C and above.

DEMO MODE

Shows preinstalled data to demonstrate function of selected screen. (Ideal for boat shows and exhibitions)



1 GAUGE ASSY,
MULTI



34011-96L45-000

2 WIRE COMP,
EXTENSION



2-1 990C0-88104-000
0.6m / 1.9ft

2-2 990C0-88105-000
1.8m / 5.9ft

3 HARNESS ASSY,
NETWORK POWER



990C0-88112-000

4 CONNECTOR COMP,
BRANCH



990C0-88110-000

5 UNIT COMP,
RESISTOR FEMALE



990C0-88113-000

6 UNIT COMP,
RESISTOR MALE



990C0-88114-000

7 WIRE COMP,
GAUGE ADAPTER



7-1 36667-96L40-000

7-2 36667-96L50-000
for Tank 3-4

7-3 36667-96L11-000
for Mechanical
Control

8 SENSOR ASSY,
PADDLE WHEEL



990C0-88317-000

GPS RECEIVER
MODULE



990C0-88122-000

9 WIRE COMP, GAUGE EXT (0.6m)



36667-96L60-000
0.6 m / 1.9ft

10 ADAPTER COMP, GAUGE



36661-96L30-000
for Dual Engine

11 ADAPTER,
GAUGE FOR MULTI



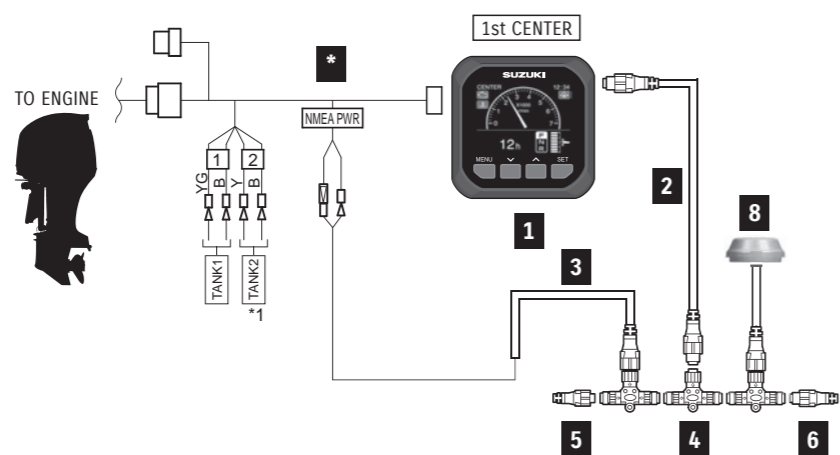
36665-87L10-000
In addition to component of
[MECHANICAL SINGLE]



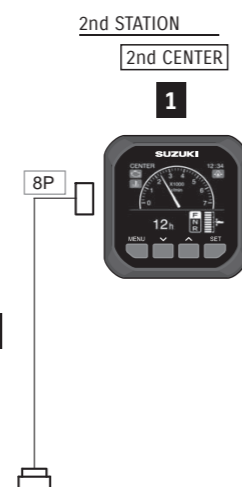
INSTALLATION DIAGRAM

SINGLE ENGINE with SPC or MECHANICAL CONTROL (CAN Connection)

SINGLE STATION



DUAL STATION (SPC ONLY)



TOTAL REQUIREMENT LIST

PART NUMBER	PART NAME	LENGTH	Total Required Quantity					
			SINGLE STATION	SINGLE STATION (Speed over water)	SINGLE STATION (Speed over ground)	DUAL STATION	DUAL STATION (Speed over water)	DUAL STATION (Speed over ground)
1	34011-96L45-000 GAUGE ASSY, MULTI	-	1	1	1	2	2	2
-	36001-88L00-000 CABLE KIT	-	-	1	1	-	1	1
8	990C0-88317-000 SENSOR ASSY, PADDLE WHEEL	-	-	1	-	-	1	-
-	990C0-88122-000 GPS RECEIVER MODULE	-	-	-	1	-	-	1
-	33926-98L00-000 TERMINAL RESISTOR	-	1	1	1	-	-	-
*SPC	36623-98L00-000 BCM HARNESS No.1	-	1	1	1	1	1	1
	36624-98L00-000 BCM HARNESS No.2	-	-	-	-	1	1	1
*Mechanical	36620-93JA0-000 MAIN WIRING HARNESS	6.5m/21.3ft	1	1	1	Dual station is not applicable for Mechanical Control.		
	36620-93JB0-000	5.0m/16.4ft						
	36620-93JC0-000	8.0m/26.2ft						

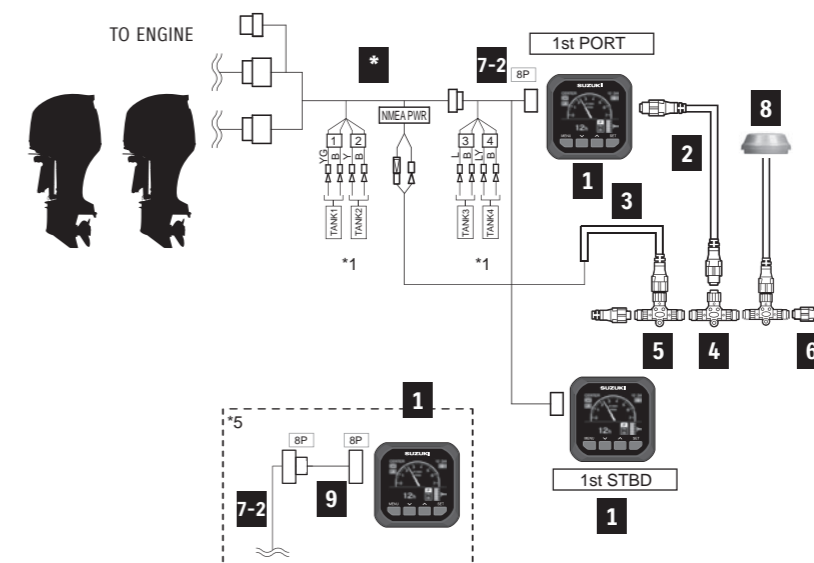
* BCM Harness No.1 & 2 ⇒ SPC See page 9.
Main Wiring Harness ⇒ Mechanical Control (CAN Connection). See page 19.

CABLE KIT COMPONENT

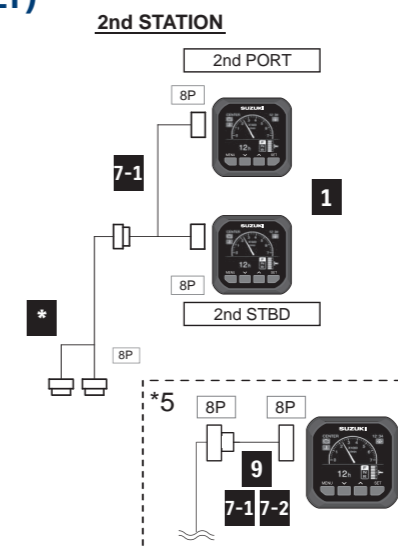
PART NUMBER	PART NAME	LENGTH	Quantity
36001-88L00-000	CABLE KIT	-	-
2	990C0-88104-000 WIRE COMP, EXTENSION	0.6m	1
3	990C0-88112-000 HARNESS ASSY, NETWORK POWER	-	1
4	990C0-88110-000 CONNECTOR COMP, BRANCH	-	1
5	990C0-88113-000 UNIT COMP, RESISTOR FEMALE	-	1
6	990C0-88114-000 UNIT COMP, RESISTOR MALE	-	1

DUAL ENGINE with SPC or MECHANICAL CONTROL (CAN Connection)

SINGLE STATION (SPC ONLY)



DUAL STATION (SPC ONLY)

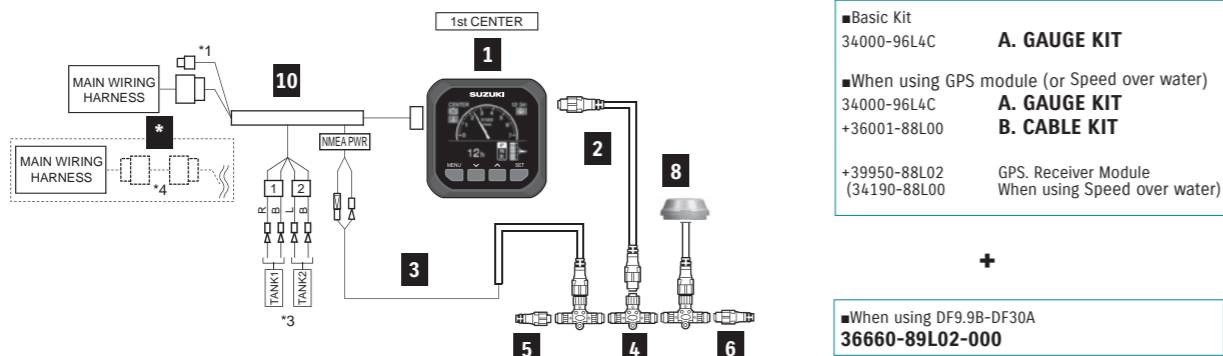


TOTAL REQUIREMENT LIST

PART NUMBER	PART NAME	LENGTH	Total Required Quantity					
			SINGLE STATION	SINGLE STATION (Speed over water)	SINGLE STATION (Speed over ground)	DUAL STATION	DUAL STATION (Speed over water)	DUAL STATION (Speed over ground)
1	34011-96L45-000 GAUGE ASSY, MULTI	-	2	2	2	4	4	4
-	36001-88L00-000 CABLE KIT	-	-	1	1	-	1	1
8	990C0-88317-000 SENSOR ASSY, PADDLE WHEEL	-	-	1	-	-	1	-
-	990C0-88122-000 GPS RECEIVER MODULE	-	-	-	1	-	-	1
9	36667-96L60-000 WIRE COMP, GAUGE EXT	-	-	-	-	Optional		
-	33926-98L00-000 TERMINAL RESISTOR	-	1	1	1	-	-	-
*SPC	36667-96L40-000 WIRE COMP, GAUGE ADAPTER	-	Select 1			2**		
7-1	36667-96L50-000 WIRE COMP, GAUGE ADAPTER (FOR TANK3-4)	-	Select 1			2**		
7-2	36623-98L30-000 BCM HARNESS No.1	-	1	1	1	1	1	1
	36624-98L10-000 BCM HARNESS No.2	-	-	-	-	1	1	1
*Mechanical	36620-93JA0-000 MAIN WIRING HARNESS	6.5m/21.3ft	2	2	2	Dual station is not applicable for Mechanical Control.		
	36620-93JB0-000	5.0m/16.4ft						
	36620-93JC0-000	8.0m/26.2ft						
	36665-87L10-000 ADAPTER, GAUGE FOR MULTI	-	1***	1***	1***			

* BCM Harness No.1 & 2 ⇒ SPC. See page 9.
Main Wiring Harness ⇒ Mechanical Control (CAN Connection). See page 19.
** 36667-96L40 x 1 + 36667-96L50 x 1 or 36667-96L40 x 2
*** Please refer to Rigging Manual for installation.

SINGLE ENGINE with MECHANICAL CONTROL (Non-CAN Connection)

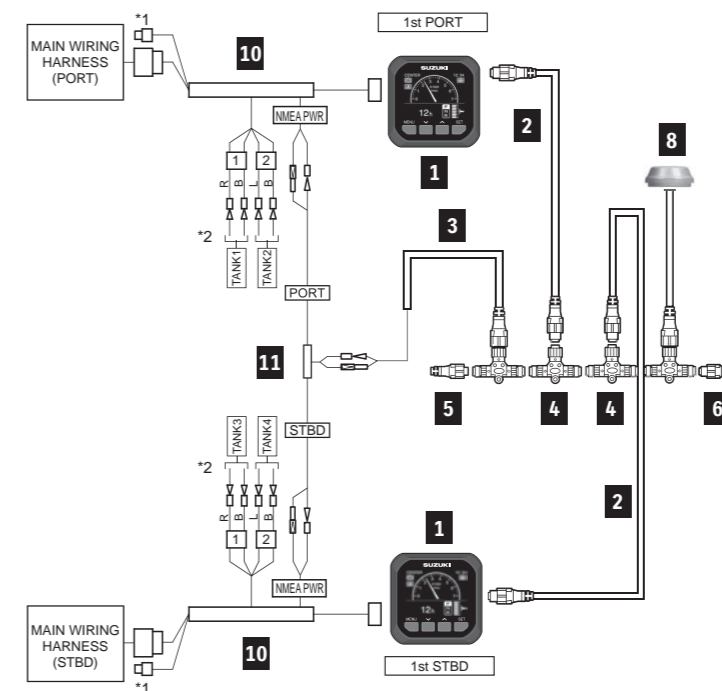


For MECHANICAL CONTROL & SINGLE ENGINE				KIT		Total Required Quantity A (+ B) << >>
PART NUMBER	PART NAME	LENGTH	A. GAUGE KIT 34000-96L4C-000	B. CABLE KIT 36001-88L00-000		
1	34011-96L45-000	GAUGE ASSY, MULTI	1	-	1	
2-1	990C0-88104-000	WIRE COMP, EXTENSION	-	1	(1)	
2-2	990C0-88105-000	WIRE COMP, EXTENSION	-	-	-	
3	990C0-88112-000	HARNESS ASSY, NETWORK POWER	-	1	(1)	
4	990C0-88110-000	CONNECTOR COMP, BRANCH	-	1	(1)	
5	990C0-88113-000	UNIT COMP, RESISTOR FEMALE	-	1	(1)	
6	990C0-88114-000	UNIT COMP, RESISTOR MALE	-	1	(1)	
8	990C0-88317-000	SENSOR ASSY, PADDLE WHEEL	-	-	(1)	
	990C0-88122-000	GPS RECEIVER MODULE	-	-	(1)	
10	36661-96L30-000	ADAPTER COMP, GAUGE	1	-	1	
*	36660-89L02-000	SET, ENG TO INTERFACE WIRE	-	-	<1>	

■ *() parts are required when using GPS module or Speed sensor.
 ■ * < > part are required when using with DF9.9B to 30A.



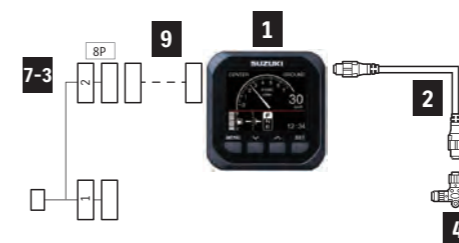
DUAL ENGINE with MECHANICAL CONTROL (Non-CAN Connection)



For MECHANICAL CONTROL & DUAL ENGINE				Total Required Quantity A (+ B)
PART NUMBER	PART NAME	LENGTH		
1	34011-96L45-000	GAUGE ASSY, MULTI	-	2
2-1	990C0-88104-000	WIRE COMP, EXTENSION	0.6m	2
2-2	990C0-88105-000	WIRE COMP, EXTENSION	1.8m	2
3	990C0-88112-000	HARNESS ASSY, NETWORK POWER	-	1
4	990C0-88110-000	CONNECTOR COMP, BRANCH	-	2
5	990C0-88113-000	UNIT COMP, RESISTOR FEMALE	-	1
6	990C0-88114-000	UNIT COMP, RESISTOR MALE	-	1
8	990C0-88317-000	SENSOR ASSY, PADDLE WHEEL	-	(1)
	990C0-88122-000	GPS RECEIVER MODULE	-	(1)
10	36661-96L30-000	ADAPTER COMP, GAUGE	-	2
11	36665-87L10-000	ADAPTER, GAUGE FOR MULTI	-	1

■ *() parts are required when using GPS module or Speed sensor.

ADDITIONAL GAUGE COMPONENT (MECHANICAL)



ADDITIONAL GAUGE COMPONENTS (MECHANICAL)				Total Required Quantity
PART NUMBER	PART NAME	LENGTH		
1	34011-96L45-000	GAUGE ASSY, MULTI	-	1
2-1	990C0-88104-000	WIRE COMP, EXTENSION	0.6m	1
2-2	990C0-88105-000	WIRE COMP, EXTENSION	1.8m	1
4	990C0-88110-000	CONNECTOR COMP, BRANCH	-	1
7-3	36667-96L11-000	WIRE COMP, DUAL GAUGE ADAPTER	-	1
9	36667-96L60-000	WIRE, GAUGE EXT	0.6m	(1)

Please use "36667-96L60-000 WIRE, GAUGE EXT" as an extension between "34011-96L45" and "36667-96L11"

ANALOGUE INSTRUMENT



TACHOMETER



White



Black



White



Black



White



Black

34200-93J14-000 (White)

34200-93J02-000 (Black)

Gauge Size 4" (101.6mm)

Applicable Model DF25A-250

Caution system alert with a monitor lamp lighting on when an abnormal engine condition occurs. Refer to SERVICE MANUAL for the detail.

34200-93J54-000 (White)

34200-93J43-000 (Black)

Gauge Size 4" (101.6mm)

Applicable Model DF40A-250

Exclusive for SUZUKI Troll Mode System. Automatically switches to low RPM scale when the SUZUKI Troll Mode System is activated.

34200-93J34-000 (White)

34200-93J22-000 (Black)

Gauge Size 4" (101.6mm)

Applicable Model DF8A-30A

Full-scale 7000-RPM TACHOMETER can be used on electric-start models by using 4, 6 or 12 pole switch on rear of meter.

TRIM GAUGE



White



Black

34800-93J13-000 (White)

34800-93J02-000 (Black)

Gauge Size 2" (50.8mm)

Applicable Model DF25A-250

Magnetic-type gauge shows trim angle for optimum performance and efficiency.

FUEL GAUGE



White



Black

34300-93J14-000 (White)

34300-93J03-000 (Black)

Gauge Size 2" (50.8mm)

FUEL GAUGE alone works with the US Standard 240-30Ω sending unit.

HOUR METER



White



Black

34500-93J13-000 (White)

34500-93J02-000 (Black)

Gauge Size 2" (50.8mm)

Applicable Model DF9.9B-250

12-Volt-electric-motor driven meter.

SPEEDOMETER

*Each speedometer includes vinyl tube, hardware, and installation manual.



White



Black

(White)

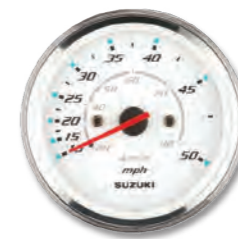
(Black)

34100-93J13-000 **34100-93J02-000**

Gauge Size 4" (101.6mm)

Maximum Speed 130km/h, 80mph

Bourdon-tube type speedometer with readings in km/h and mph.



White



Black

(White)

(Black)

34100-93J33-000 **34100-93J22-000**

Gauge Size 4" (101.6mm)

Maximum Speed 80km/h, 50mph

Bourdon-tube type speedometer with readings in km/h and mph.

SPEEDOMETER SENDER ASSY



34100-93J53-000 (White)

Gauge Size 4" (101.6mm)

Maximum Speed 80km/h, 40knots

Bourdon-tube type speedometer with readings in km/h and knots.



34190-95500-000



34190-87D00-000

VOLTMETER



White



Black

34600-93J13-000 (White)

34600-93J02-000 (Black)

Gauge Size 2" (50.8mm)

Applicable Model DF9.9B-250

WATER-PRESSURE GAUGE



White



Black

34650-93J33-000 (White)

34650-93J22-000 (Black)

Gauge Size 2" (50.8mm)

Applicable Model DF40A-250

Select an appropriate INSTALLATION KIT for each model.

INSTALLATION KIT for WATER-PRESSURE GAUGE



34660-90J04-000

Applicable Model DF40A-140B

34660-96J01-000

Applicable Model DF150A-200A

34660-93J02-000

Applicable Model DF200-250

STEERING



TILLER HANDLE KIT



63002-88L2A-YAY

Applicable Model
DF40A/50A

63002-88L18-YAY

Applicable Model
DF60A/50AV/60AV

63002-87L20-YAY

Applicable Model
DF70A-100B
(Year 2022~)

63002-99L00-YAY

Applicable Model
DF100C/115BT

MAIN FEATURE



Tachometer with warning indicators



Three-position angle adjustable bracket



Troll mode switch
- Activates SUZUKI Troll Mode System and controls RPM from idling engine speed up to 1200rpm at every 50rpm.



Power trim & tilt switch and throttle grip friction adjuster



DUAL-ENGINE TIE-BAR



67600-99L00-000

Stainless steel
Applicable Model DF100C-140B

67600-93J00-000

Stainless steel
Applicable Model DF150A-200A/200-250

STEERING EXTENSION KIT



67630-93J00-000

for installation of DUAL-ENGINE TIE-BAR
(67600-93J00-000)
Applicable Model DF150A-200A/200-250

DRAG-LINK KIT *67700- includes Steering Cable Seal



67700-87L10-000

Applicable Model DF70A-100B
(Year 2022~)

67700-93J00-000

Applicable Model DF40A-60A/
200-250

67700-96J00-000

Applicable Model DF150A-200A

67701-87J11-000

Applicable Model DF40A-60A/
200-250

67701-87L10-000

Applicable Model DF70A-90A/100B
(Year 2022~)

67701-90J01-000

Applicable Model DF100C-140B

67701-96J00-000

Applicable Model DF150A-200A

67701-94L00-000

Applicable Model DF25A/30A

67701-99J02-000

Applicable Model DF8A-DF20A

STEERING-BRACKET ATTACHMENT



43755-87L00-000

Applicable Model DF70A-100B

43755-88L00-000

Applicable Model DF40A-60A

43755-94L00-000

Applicable Model DF25A-30A

43755-99J01-000

Applicable Model DF8A-20A

STEERING CABLE SEAL



41161-94400-000

Applicable Model DF8A-250

STEERING CYLINDER CANCELLER KIT



43150-87MA0-QTN
Applicable Model
DF300BMD/350AMD



43150-87MA0-YAY
Applicable Model
DF300BMD/350AMD

STEERING ATTACHMENT KIT



43700-87M00-000
Applicable Model
DF300BMD/350AMD

STEERING STOPPER



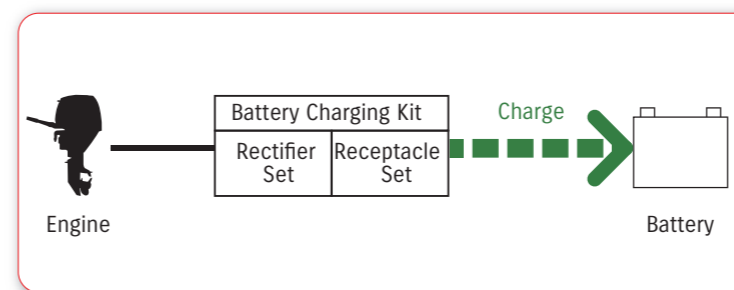
99000-81500-000
Applicable Model
DF300BMD/350AMD



ELECTRICAL PARTS

BATTERY CHARGING KIT

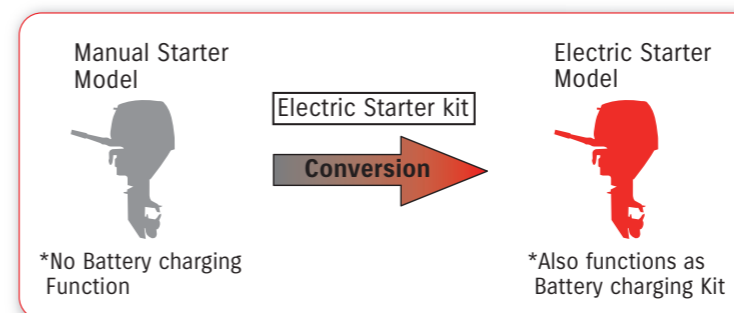
• Optional equipment for charging Battery



APPLICABLE MODEL	DF4A/5A/6A	DF8A/9.9A	DF9.9B/15A/20A	DF25A/30A
BATTERY CHARGING KIT	32000-97L10-000	32000-99J03-000	32000-89L04-000	32000-94L03-000
RECTIFIER and REGULATOR SET	32801-97L01-000	32801-95J03-000	32801-89L02-000	32800-88L01-000
RECEPTACLE KIT	39600-97L10-000	39600-94J03-000	39600-89L02-000	39600-94L01-000
BRACKET				32815-94L01-000
BOLT				01550-06207-000

ELECTRIC STARTER KIT

* Electric Starter Kit functions as Battery charging Kit as well.



APPLICABLE MODEL	DF8A/9.9A	DF25A/30A	DF9.9B	DF15A	DF20A
ELECTRIC STARTER KIT	31000-99J12-000	31000-94L10-000	31000-89L09-000 (~Year 2017) 31000-89L26-000 (Year 2018~)		
ENGINE CONTROL MODULE	-	-	33930-89LE0-000	33930-89LC0-000	33930-89L80-000 33930-89LA0-000 (P40)

*When fitting to a non-Electric Starter model, please ensure to also replace the ECM with the ones shown here.

BATTERY ISOLATOR LEAD SET

Optional equipment for charging additional battery.



33830-98J11-000
Applicable Model DF150A-350A

FUEL SYSTEM

FUEL TANK

NOTE : These tanks do not meet US-EPA requirements.



65000-99100-000

12-liter plastic tank without fuel-level gauge

Applicable Model DF4A/5A/6A

65000-94L10-000

25-liter plastic tank with a fuel-level gauge

Applicable Model DF8A-140B

65000-89L10-000

12-liter plastic tank

Applicable Model DF4A-20A

REPLACEMENT FUEL CAP

NOTE : Not US-EPA compatible.

65520-99100-000

Applicable Model DF5A-20A/R

FUEL-HOSE SOCKET



65750-98506-000

Metal, Inner diameter: 11.2 mm

Applicable Model DF4A-20A/R



65750-87J11-000

Plastic, Inner diameter: 6.6 mm

Applicable Model DF4A/8A-30A



65750-95501-000

Metal, Inner diameter: 13.0 mm

Applicable Model DF8A/R-140B

FUEL CONNECTOR



65720-986L0-000

Engine side, Plastic

Applicable Model DF4A



65740-95D01-000

Tank side, Outer diameter: 13 mm, 1/4"NPT

Applicable Model DF8A/R-140B

SQUEEZE PUMP



65770-90J13-000

Large-in & Large-out

Applicable Model DF8A-20A/40A-140B

65770-93J13-000

Large-in & Large-out

Applicable Model DF150A-350A

SQUEEZE PUMP

(US-EPA compatible.)

65770-90J04-000

Large-in & Large-out

Applicable Model DF8A-140B

FUEL-HOSE

09352-73124-00D

I/D 7.3 , O/D 12.5

LENGTH 4,000mm

Not US-EPA compatible

FUEL-HOSE COMPONENT



65700-87J19-000

for 25-liter plastic tank to engine

Applicable Model DF8A-20A

65700-90J18-000

for 25-liter plastic tank to engine

Applicable Model DF40A-60A

65700-90J24-000

for 25-liter plastic tank to engine

Applicable Model DF70A-140B

65700-93J14-000

for fuel tank to engine

Applicable Model DF150A-350A

FUEL-HOSE COMPONENT

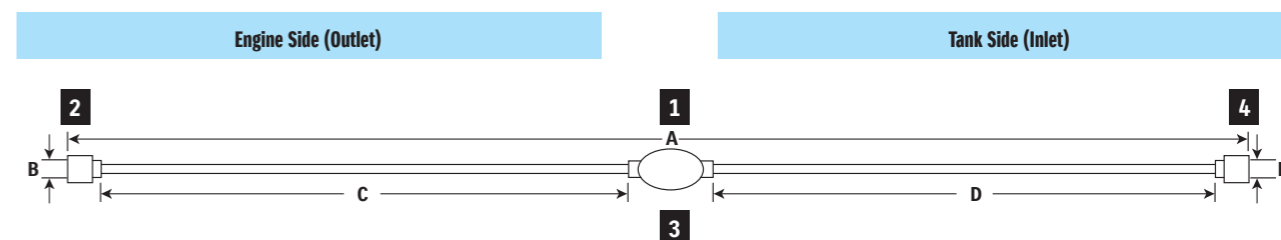
(US-EPA compatible.)

65700-87J28-000

Applicable Model DF5A-30A

65700-88L06-000

Applicable Model DF40A-60A



FUEL-HOSE COMPONENT Chart

1	2	3	4
FUEL-HOSE COMPONENT	FUEL-HOSE SOCKET	SQUEEZE PUMP	FUEL-HOSE SOCKET
	Metal		Metal
	Plastic		

1 FUEL HOSE COMPONENT	2 SOCKET		HOSE				3 SQUEEZE PUMP	HOSE			4 SOCKET			
	Part Number	A Length (mm)	Material	B I/D (mm)	Part Number	C Length (mm)		I/D (mm)	O/D (mm)	D Length (mm)	I/D (mm)	O/D (mm)	Material	E I/D (mm)
65700-87J19-000	1970	Plastic	6.6	65750-87J11-000	700	7.3	12.5	65770-90J13-000	1100	7.3	12.5	Metal	13.0	65750-95501-000
65700-90J18-000	1250	(no socket)	-	-	(no hose)	-	-	65770-90J13-000	1100	7.3	12.5	Metal	13.0	65750-95501-000
65700-90J24-000	1930	(no socket)	-	-	700	7.3	12.5	65770-90J13-000	1100	7.3	12.5	Metal	13.0	65750-95501-000
65700-93J14-000	3100	(no socket)	-	-	750	9.0	15.0	65770-93J13-000	2250	Large	9.0	15.0	(no socket)	-
65700-87J28-000	2000	Plastic	6.6	65750-87J11-000	700	7.3	12.5	65770-90J03-000	1100	7.3	12.5	Metal	13.0	65750-95501-000
65700-88L06-000	1280	(no socket)	-	-	(no hose)	-	-	65770-90J03-000	1100	7.3	12.5	Metal	13.0	65750-95501-000

WATER SEPARATOR / FUEL FILTER



65900-98J11-000

Applicable Model DF5A-DF140B

65900-98J21-000

Applicable Model DF150A-DF350A

WATER SEPARATOR/FUEL FILTER ELEMENT SET



65910-98J01-000

Applicable Model DF5A-DF350A

SUZUKI PROPELLERS

WATERGRIP WATERGRIP

WATERGRIP is a stainless-steel propeller series offering accurate response to User operation. Converting engine power into propulsion with high efficiency, this propeller series meets our customer's demand for bigger, faster, more powerful outboards. The WATERGRIP propeller series employs a new interchangeable and square shaped propellerbush that minimises power loss in delivery.

Applicable Model	Material	Blade	Diameter		Pitch		Rotation*	Part number
			in	(mm)	in	(mm)		
DF150/150AP, DF175/DF175AP, DF200/DF200AP, DF225, DF250/DF250AP, DF300AP	Stainless	3	14 1/2	(368.3)	25	(635.0)	RR	58700-96J40-000
					CR	58800-96J40-000		
			27	(685.8)	RR	58700-96J50-000		
					CR	58800-96J50-000		
			14 3/4	(374.7)	23	(584.2)	RR	58700-96J30-000
					CR	58800-96J30-000		
			15	(381.0)	21	(533.4)	RR	58700-96J20-000
					CR	58800-96J20-000		
			15 1/4	(387.4)	19	(482.6)	RR	58700-96J10-000
					CR	58800-96J10-000		
			15 1/2	(393.7)	17	(431.8)	RR	58700-96J00-000
					CR	58800-96J00-000		
			16	(406.4)	15	(381.0)	RR	58700-93L81-000
					RR	58700-93L01-000		
					CR	58800-93L00-000		
					18 1/2	(469.9)	RR	58700-93L11-000
					CR	58800-93L10-000		
					20	(508.0)	RR	58700-93L21-000
		CR			58800-93L20-000			
		21 1/2			(546.1)	RR	58700-93L31-000	
		CR			58800-93L30-000			
		23			(584.2)	RR	58700-93L41-000	
		CR	58800-93L40-000					
		24 1/2	(622.3)	RR	58700-93L51-000			
				CR	58800-93L50-000			
				26	(660.4)	RR	58700-93L61-000	
				CR	58800-93L60-000			
		27 1/2	(698.5)	RR	58700-93L70-000			
		4	15 1/4	(387.4)	18	(457.2)	RR	58700-93J00-000
					RR	58700-93J10-000		
					CR	58800-93J10-000		
					22	(558.8)	RR	58700-93J20-000
					CR	58800-93J20-000		
					24	(609.6)	RR	58700-93J30-000
		CR	58800-93J30-000					
		26	(660.4)	RR	58700-93J40-000			
CR	58800-93J40-000							

*RR:Regular-Rotation model, CR:Counter-Rotation model

WATERGRIP DUAL WATERGRIP DUAL

Our flagship models, the DF350A, DF325A and DF300B, introduced the Suzuki Dual Prop System, an industry-leading technology, which delivers outstanding and exciting performance. The two contra-rotating propellers, operating simultaneously, enables greater conversion efficiency as well as better stability, grip, and manoeuvrability.



Applicable Model	Material	Blade	Diameter		Pitch		Part number	
			in	(mm)	in	(mm)	(Front)	(Rear)
DF300B, DF325A, DF350A	Stainless	3	15 1/2	(393.7)	12	(304.8)	58500-98LA0-000	58600-98LA1-000
					15	(381.0)	58500-98LB0-000	58600-98LB1-000
					16 1/2	(419.1)	58500-98LC0-000	58600-98LC1-000
					18	(457.2)	58500-98L90-000	58600-98L91-000
					19 1/2	(495.3)	58500-98L60-000	58600-98L61-000
					21	(533.4)	58500-98L00-000	58600-98L01-000
					22 1/2	(571.5)	58500-98L10-000	58600-98L11-000
					24	(609.6)	58500-98L20-000	58600-98L21-000
					25 1/2	(647.7)	58500-98L30-000	58600-98L31-000
					27	(685.8)	58500-98L40-000	58600-98L41-000
					28 1/2	(723.9)	58500-98L50-000	58600-98L51-000
					30	(762.0)	58500-98L70-000	58600-98L71-000
31 1/2	(800.1)	58500-98L80-000	58600-98L81-000					

WATERGRIP SPORT WATERGRIP SPORT

The WATERGRIP SPORT propellers feature a high rake blade design for excellent acceleration and exceptional top speed. These propellers are ideal for lightweight sports boats as they give remarkably stable thrust when turning for superior manoeuvrability.

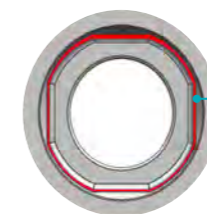


Applicable Model	Material	Blade	Diameter		Pitch		Rotation*	Part number
			in	(mm)	in	(mm)		
DF150/150AP, DF175/DF175AP, DF200/DF200AP, DF225, DF250/DF250AP, DF300AP	Stainless	3	14	(355.6)	27	(685.8)	RR	58700-96L40-000
			14 1/4	(362.0)	25	(635.0)	RR	58700-96L30-000
			14 1/2	(368.3)	23	(584.2)	RR	58700-96L20-000
			14 7/8	(377.8)	21	(533.4)	RR	58700-96L10-000
			15	(381.0)	19	(482.6)	RR	58700-96L00-000

*RR:Regular-Rotation model, CR:Counter-Rotation model

The WATERGRIP propeller series employs a new interchangeable and square shaped propeller bush that minimizes power loss in delivery.

PROPELLER BUSH ADVANTAGES



Interchangeable bush with Better resistance over propeller ship

PROPELLER LINE-UP

Model	Material	Blade	Diameter		Pitch		Rotation*	Description	Part number		
			in	(mm)	in	(mm)					
DF2.5	Aluminum	3	7 3/8	(187.3)	5 3/8	(136.5)	RR		58110-97JA0-019		
DF4A, DF5A, DF6A	Aluminum	3	7 1/2	(190.5)	6	(152.4)	RR		58110-91JL0-019		
					6 1/2	(165.1)	RR		58110-91JM0-019		
					7	(177.8)	RR		58110-91JN0-019		
DF8A, DF9.9A	Aluminum	3	9 1/4	(235.0)	7	(177.8)	RR		58100-89L00-019		
					8	(203.2)	RR	THICK	58100-90L41-019		
					9	(228.6)	RR		58100-89L20-019		
							RR	THICK	58100-90L50-019		
					10	(254.0)	RR		58100-89L60-019		
							RR	THICK	58100-90L60-019		
					11	(279.4)	RR		58100-89L70-019		
DF9.9B, DF15A, DF20A	Aluminum	3	9 1/4	(235.0)	7	(177.8)	RR		58100-89L00-019		
					8	(203.2)	RR	THICK	58100-90L41-019		
					9	(228.6)	RR		58100-89L20-019		
							RR	THICK	58100-90L50-019		
					10	(254.0)	RR		58100-89L60-019		
							RR	THICK	58100-90L60-019		
		11	(279.4)	RR		58100-89L70-019					
		12	(304.8)	RR		58100-89L50-019					
				4	10	(254.0)	5	(127.0)	RR	High thrust	58100-94JA2-019
							7	(177.8)	RR	High thrust	58100-94JB1-019
		DF25A, DF30A	Aluminum	3	10 1/4	(260.3)	9	(228.6)	RR	THICK	58100-96372-YAY
							10	(254.0)	RR		58100-91L40-019
							RR	THICK	58100-96472-YAY		
11	(279.4)						RR		58100-91L50-019		
12	(304.8)						RR		58100-91L20-019		
							RR	THICK	58100-96482-YAY		
13	(330.2)						RR		58100-91L30-019		
							RR	THICK	58100-96492-YAY		
DF40A, DF50A, DF60A	Aluminum	3	11	(279.4)	17	(431.8)	RR		58100-88LF0-019		
					11 1/8	(282.6)	RR		58100-88LS0-019		
					11 1/4	(285.8)	RR		58100-88LR0-019		
					11 3/8	(288.9)	RR		58100-88LQ0-019		
					9	(228.6)	RR		58100-88LC0-019		
					10	(254.0)	RR		58100-88LD0-019		
			11	(279.4)	RR		58100-88LE0-019				
			13	(330.2)	RR		58100-88LB0-019				
			11 5/8	(295.3)	RR		58100-88LA0-019				
			Stainless	3	11 1/8	(282.6)	16	(406.4)	RR		58200-88L30-000

*RR:Regular-Rotation model, CR:Counter-Rotation model

Model	Material	Blade	Diameter		Pitch		Rotation*	Description	Part number		
			in	(mm)	in	(mm)					
DF50AV, DF60AV	Aluminum	3	13 3/4	(349.3)	12	(304.8)	RR		58100-87LJ1-019		
					17	(431.8)	RR		58100-87LC1-019		
			13 7/8	(352.4)	15	(381.0)	RR		58100-87LB1-019		
					9	(228.6)	RR		58100-87LG1-019		
					11	(279.4)	RR		58100-87LH1-019		
DF70A, DF80A, DF90A, DF100B	Aluminum	3	13 1/2	(342.9)	15	(381.0)	RR		58100-90JE0-019		
					17	(431.8)	RR		58100-87LC1-019		
			13 3/4	(349.3)	19	(482.6)	RR		58100-87LD1-019		
					21	(533.4)	RR		58100-87LE1-019		
					23	(584.2)	RR		58100-87LF1-019		
			Stainless	3	13 7/8	(352.4)	15	(381.0)	RR		58100-87LB1-019
							13	(330.2)	RR		58100-87LA1-019
					14	(355.6)	17	(431.8)	RR		58100-90JA0-019
							19	(482.6)	RR		58100-90JB0-019
							21	(533.4)	RR		58100-90JC0-019
							23	(584.2)	RR		58100-90JD0-019
							15	(381.0)	RR		58200-92J40-000
							17	(431.8)	RR		58200-92J50-000
							19	(482.6)	RR		58200-92J60-000
							21	(533.4)	RR		58200-92J70-000
23	(584.2)	RR		58200-92J80-000							
25	(635.0)	RR		58200-92J90-000							
DF100C, DF115B, DF115BG, DF140B, DF140BG	Aluminum	3	13 1/2	(342.9)	15	(381.0)	RR		58100-90JE0-019		
					17	(431.8)	RR		58100-90JA0-019		
			14	(355.6)	19	(482.6)	RR		58100-90JB0-019		
					21	(533.4)	RR		58100-90JC0-019		
					23	(584.2)	RR		58100-90JD0-019		
			Stainless	3	13 7/8	(352.4)	15	(381.0)	RR		58200-92J40-000
							17	(431.8)	RR		58200-92J50-000
							19	(482.6)	RR		58200-92J60-000
							21	(533.4)	RR		58200-92J70-000
							23	(584.2)	RR		58200-92J80-000
							25	(635.0)	RR		58200-92J90-000
							19	(482.6)	CR		58200-92JA0-000
							21	(533.4)	CR		58200-92JB0-000
							23	(584.2)	CR		58200-92JC0-000
							25	(635.0)	CR		58200-92JD0-000

*RR:Regular-Rotation model, CR:Counter-Rotation model

HARDWARE for PROPELLER

Applicable Model	STOPPER	PROPELLER BUSH	HARDWARE KIT					COTTER PIN
			SPACER	WASHER	STOPPER	NUT		
DF2.5	57635-91JL0-000	58120-97JA0-000	N/A	-	-	-	58130-91JL0-000	09204-03003-000
DF4A/5A/6A	57635-97L00-000	58120-91JL0-000	N/A	-	-	-	58130-91JL0-000	09204-03003-000
DF8A/9.9A	57632-94J00-000	58120-89L00-000	N/A	-	09160-12066-000	-	09141-12005-000	09204-02004-000
DF9.9B/15A/20A	57632-94J00-000	58120-89L00-000	N/A	-	09160-12066-000	-	09141-12005-000	09204-02004-000
DF25A/30A	57632-91L00-000	58120-96401-000	57630-96300-000	57633-96300-000	09160-14028-000	-	09141-14008-000	09204-03003-000
DF40A/50A/60A	57632-95320-000	58120-88L01-000	57630-94301-000	57633-94301-000	09160-18028-000	-	09141-18005-000	09204-03003-000
DF50AV/60AV	57635-90J01-000	58105-90J00-000	57630-90J10-000	57633-90J10-000	09160-18028-000	-	09141-18005-000	09204-03003-000
DF70A/80A/90A/100B	57632-87L01-000	58105-90J00-000	57630-90J10-000	57633-90J10-000	09160-18028-000	-	09141-18005-000	09204-03003-000
DF100C/115B/115BG/140B/140BG	57635-92J10-000	58105-90J00-000	57630-90J10-000	57633-90J10-000	09160-18028-000	-	09141-18005-000	09204-03003-000
DF150A-300AP	57632-93L11-000	58120-93L00-000	57630-93L00-000	57633-93L00-000	09160-18028-000	-	09141-18005-000	09204-03003-000
DF300B/DF325A/350A Front	58531-98L00-000	58520-98L00-000	58540-98L01-000	58541-98L00-000	-	58551-98L00-000	58561-98L01-000	-
DF300B/DF325A/350A Rear	58631-98L00-000	58620-98L00-000	58640-98L10-000	58641-98L00-000	09160-18019-000	-	09141-18005-000	09204-03003-000



CHOOSING THE RIGHT PROPELLER

Propeller selection is very important in the performance of the boat. Acceleration, speed, fuel efficiency, stability and engine RPM all are affected by the propeller. Operating requirements and conditions will also determine which design, style and pitch of the propeller your customer can choose. The combination of boat, engine and appropriate propeller size may have already been tested by the boat manufacturer. **Your Customer may need your assistance to determine the correct propeller for their application.**

STAINLESS STEEL PROPELLERS

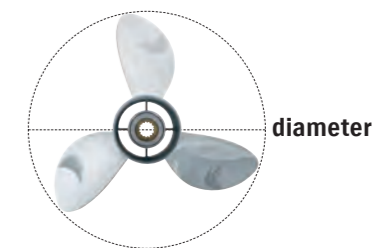
Suzuki Stainless Steel Propellers offer high performance and durability. Their aggressive design enhances the overall performance of the boat and the durability of stainless steel ensures long term dependability. Suzuki Stainless Steel propellers are also fitted with a rubber cushion hub to help absorb vibration and shock should they strike a foreign object.

PROPELLER SIZING

When referring to propeller size, the first number is the number of blades, the second number details the **diameter** of the propeller, and the third number is the **pitch**.
Example: **3 x 13 x 18** = 3 blades x Diameter: 13 inches x Pitch: 18 inches.
The pitch is the most significant factor when choosing a propeller.

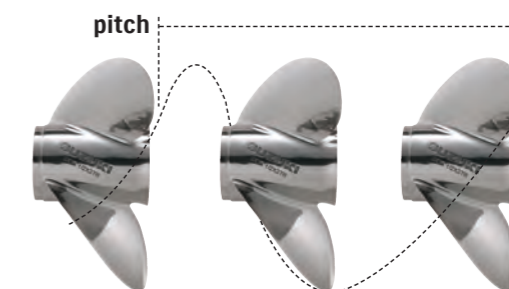
DIAMETER

Diameter is the distance across an imaginary circle that is made when a propeller rotates. Diameter is determined during the designing process of a propeller and is usually based on engine size, gear case design, horsepower and speed.



PITCH

Pitch is the theoretical distance that a propeller corkscrews forward through the water. In theory, an 18" (457.2mm) pitch propeller would travel 18" (457.2mm) with each complete revolution*. Lower pitches accelerate faster, but have lower top end speed. Higher pitches have a slower acceleration, but attain higher top speeds. An inch of pitch is generally equal to 150-200 engine RPM at wide open throttle (WOT). If pitch increases by an inch, RPM will decrease by 150-200 RPM at WOT. If pitch decreases by an inch, RPM will increase by 150-200 RPM at WOT.
*Note during actual operation, this number will be affected by slip factors such as water conditions, boat weight, propeller style, etc.



PROPELLER CUP

Cup is the curve along the trailing edge of the propeller blade. This reduces propeller slip and ventilation, allowing users to operate their engine at a higher transom mounting, and use more trim for bow lift.



RAKE

Rake is the angle, in degrees, that the propeller blades are mounted to the barrel of the propeller. Blades of a zero degree rake propeller are mounted perpendicular to the barrel. High rake propellers have blades that angle more to the rear of the propeller. These blades hold water longer and ventilate less at higher engine heights. Such propellers produce higher thrust which helps lift the bow of the boat more effectively.

MAINTAINING YOUR SUZUKI



CARE & MAINTENANCE ITEM



ECSTAR V7000 SEMI-SYNTHETIC MARINE ENGINE OIL



- Help to protect engines in severe conditions.
- Contribute to improve engine response.
- Viscosity index improvers help engine start easily.
- Advanced detergents keep engine parts clean.
- Special additives help protect engine in both salt and fresh water environments.

Typical Properties		Sales Unit	Part Number
SAE viscosity grade	10W-40	12x1L	990F0-22B31-001
Oil grade	Semi-Synthetic	4x4L	990F0-22B31-004
Quality	FC-W	1x60L	990F0-22B31-060
		1x208L	990F0-22B31-208

ECSTAR MARINE GEAR OIL



ECSTAR MARINE GEAR OIL SAE 90 GL-5

Volume	> 1 L/60 L
Container	> plastic bottle/drum
Sales Unit	
12 x 1 L	990F0-22B33-001
1x 60 L	990F0-22B33-060



ECSTAR MARINE GEAR OIL PUMP

Designed for 1 l ECSTAR gear oil bottle with hose and connector suitable for Suzuki outboard engines.

Sales Unit	1pc
	990C0-99002-000

PAINT SPAY



990F0-41005-CLR
CLEAR COAT

990F0-41005-YAY
PEARL NEBULAR BLACK

990F0-41005-0ED
CALIFORNIA GREY METALLIC

990F0-41005-Y5S
WHITE

990F0-41005-0EP
SHADOW BLACK METALLIC

990F0-41005-QTN
NEW WHITE

GREASE



99000-25520-000
WATER RESISTANT GREASE EP2
250 grams (8.8 oz)

Replacement Guideline (Engine oil & Gear oil)

Interval	1st time	20 hours or 1 month*
	From 2nd time	100 hours or 1 year*

*Whichever comes first.

This guideline may vary by outboard model, condition of use, region, etc.

OTHER ITEMS

SUZUKI MARINE by MOTUL (Suzuki Approved)



4-STROKE ENGINE OIL
SAE 10W-30 Semi-Synthetic,FC-W
12x1L 99000-22B59-4T1
4x5L 99000-22B59-4T5



4-STROKE ENGINE OIL
SAE 10W-40 Semi-Synthetic,FC-W
12x1L 99000-22B60-4T1
4x5L 99000-22B60-4T5
60L 99000-22B60-4T6
208L 99000-22B60-4T8



MARINE GEAR OIL
SAE 90 GL-5
12x1L 99000-22B61-001



MARINE GEAR OIL
SAE 90, GL-5
24x0.35L 99000-22B61-P35

TOUCH-UP PAINT

99000-10203-0EP
SHADOW BLACK METALLIC (set)

99000-10203-YAY
PEARL NEBULAR BLACK (set)

99000-10202-Y5S
WHITE (single)

990F0-10202-QTN
NEW WHITE

LIQUID GASKET



99000-31140-THR
1207B (BLACK)
100 grams (3.5 oz)

THREAD LOCK



99000-32130-000
1360 (RED)
50 grams (1.7 oz)

GREASE



SHELL GADUS S2 V100 3*
plastic cartridge
For AT, BE, CH, DE, FR, UK, IE, IT, LU, NL, RO
1 x 400g 990F0-25011-GER
For CZ, DK, EE, FI, UK, HU, LT, LV, NO, PL, SE, SK
1 x 400g 990F0-25011-002
For BA, BG, ES, HR, IT, PT, RO, RS, SI, TR
1 x 400g 990F0-25011-003
*Replacement for Super Grease A
99000-25011-000/99000-25480-000

FLUSH-HOSE ATTACHMENT



55181-95200-000
Applicable Model DF4A-6A/40A-60A



17917-87L00-000
Applicable Model DF8A-350A

FLUSHING TOOL



99000-81202-000
Applicable Model DF300B/325A/350A
(~Year 2022)

99000-81211-000
Applicable Model DF300B/325A/350A
(Year 2023~)

99000-81220-000
Applicable Model DF250S (Year 2023~)
DF250AUN

ZINC ANODE for saltwater



55300-95500-000
Applicable Model DF8A/9.9A/40A-60A



55125-96310-000
Applicable Model DF25/R/Q



55321-90J01-000
Applicable Model DF50AV/60AV/
100C-140B

ALUMINUM ANODE for brackish water, saltwater



55321-87J01-000
Applicable Model DF2.5-350A



55320-94900-000
Applicable Model DF60A-350A



55321-95J00-000
Applicable Model DF2.5, DF4A-6A
55321-93J01-000
Applicable Model DF70A-90A/
100B/150-350A

MAGNESIUM ANODE for freshwater



55321-87J11-000
Applicable Model DF4A-350A



55321-94910-000
Applicable Model DF70A-350A

ANODE BULK PACK

55321-87810-B50
Applicable Model DF2.5-350A
55321-87J01 x 50pcs in one package

ENGINE COVER



99000-81700-000
Applicable Model DF8A-20A

99000-81710-000
Applicable Model DF25-60A

99000-81720-000
Applicable Model DF70A-100B

99000-81730-000
Applicable Model DF100C-140B,
DF200-250

99000-81740-000
Applicable Model DF150A-200A

99000-81750-000
Applicable Model DF300B-350A

MAINTENANCE KIT

SUZUKI highly recommends you to replace your outboard motor with Maintenance Kits every 100 hours or 1 year, whichever comes first.



You can also check the components for Maintenance Kits at Suzuki Ultimate Rigging Selector (in PDF section):
<https://www.globalsuzuki.com/marine/SuzukiUltimateRiggingSelector/>



LINEUP For 4 STROKE OBM

MODEL YEAR	KIT PART NUMBER	PART NUMBER	PART NAME	QTY
DF2/2.5 ('12-)	16500-97J00	09168-10022-000	GASKET(10X17X1.5)	1
		09202-02006-000	PIN(2.9X14)	1
		09204-03003-000	PIN	1
		09280-33005-000	O RING(D:1.9, ID:32.7)	1
		09482-00406-000	PLUG, SPARK(CRGHSA)	1
		17461-97J00-000	IMPELLER, WATER PUMP	1
		17471-97J00-000	PANEL, PUMP CASE UNDER	1
		17472-97J00-000	GASKET, PUMP CASE PANEL	1
		55321-87J01-000	ANODE, PROTECTION	1
		59178-97J00-000	GASKET, DRAIN PLUG	2
DF4A/5A/6A P01 DF4A/6A P03 ('17-)	16500-97L00	17400-986L2-000	KIT, WATER PUMP REPAIR	1
		09168-12017-000	GASKET(12X17X1)	1
		09204-03003-000	PIN	1
		09280-39002-000	O RING(D:2, ID:38.5)	1
		09482-00L04-000	PLUG, SPARK(CPR6EA-9)	1
		16510-16H11-000	FILTER, ENGINE OIL	1
		44330-13H00-000	FILTER, FUEL	1
		55321-87J01-000	ANODE, PROTECTION	1
		55321-95J00-000	ANODE, PROTECTION	1
		59178-97J00-000	GASKET, DRAIN PLUG	2
DF8A/9.9A ('10-)	16500-99J00	17400-99J20-000	KIT, WATER PUMP REPAIR	1
		09168-12017-000	GASKET(12X17X1)	1
		09204-02004-000	PIN	1
		09280-13004-000	O RING(D:1.9, ID:13)	1
		09280-22019-000	O RING(D:1.9, ID:21.8)	1
		09280-54001-000	O RING(D:2.4, ID:52.6)	1
		09482-00528-000	PLUG, SPARK(CR6E)	2
		15410-98500-000	FILTER, FUEL	1
		16510-45H10-000	FILTER ASSY, ENG OIL	1
		55321-87J01-000	ANODE, PROTECTION	2
DF9.9B/15A/20A ('13-)	16500-89L00	17400-99J20-000	KIT, WATER PUMP REPAIR	1
		09168-12017-000	GASKET(12X17X1)	1
		09204-02004-000	PIN	1
		09280-13004-000	O RING(D:1.9, ID:13)	1
		09280-22019-000	O RING(D:1.9, ID:21.8)	1
		09280-54001-000	O RING(D:2.4, ID:52.6)	1
		09482-00661-000	PLUG, SPARK(MR6K-9)	2
		15410-87L00-000	FILTER, FUEL	1
		16510-45H10-000	FILTER ASSY, ENG OIL	1
		55321-87J01-000	ANODE, PROTECTION	2

MODEL YEAR	KIT PART NUMBER	PART NUMBER	PART NAME	QTY
DF25A/30A ('15-)	16500-94L00	17400-94L21-000	KIT, WATER PUMP REPAIR	1
		09168-12017-000	GASKET(12X17X1)	1
		09204-03003-000	PIN	1
		09280-22019-000	O RING(D:1.9, ID:21.8)	1
		09482-00661-000	PLUG, SPARK(MR6K-9)	3
		15410-87L00-000	FILTER, FUEL	1
		16510-87J02-000	FILTER ASSY, OIL	1
		55321-87J01-000	ANODE, PROTECTION	5
		59178-97J00-000	GASKET, DRAIN PLUG	2
		17400-88L01-000	KIT, WATER PUMP REPAIR	1
DF40A/50A/60A ('10-)	16500-88L00	09168-10022-000	GASKET(10X17X1.5)	2
		09168-12012-000	GASKET(12.5X20X2.5)	1
		09204-03003-000	PIN	1
		09280-22019-000	O RING(D:1.9, ID:21.8)	2
		09482-00446-000	PLUG, SPARK(NGK DCPR6E)	3
		15410-88L00-000	FILTER, FUEL	1
		16510-87J02-000	FILTER ASSY, OIL	1
		55321-87J01-000	ANODE, PROTECTION	3
		17400-99E12-000	KIT, WATER PUMP REPAIR	1
		09168-10022-000	GASKET(10X17X1.5)	2
DF50AV/60AV ('14-)	16500-88L10	09168-12012-000	GASKET(12.5X20X2.5)	1
		09204-03003-000	PIN	1
		09280-22019-000	O RING(D:1.9, ID:21.8)	2
		09482-00446-000	PLUG, SPARK(NGK DCPR6E)	3
		15410-88L00-000	FILTER, FUEL	1
		16510-87J02-000	FILTER ASSY, OIL	1
		55321-87J01-000	ANODE, PROTECTION	3
		17400-87L04-000	KIT, WATER PUMP REPAIR	1
		09168-10038-000	GASKET, DRAIN PLUG	2
		09168-12012-000	GASKET(12.5X20X2.5)	1
DF70A-90A ('21MY-), DF100B	16500-87L00	09204-03003-000	PIN	1
		09280-22019-000	O RING(D:1.9, ID:21.8)	3
		09482-00446-000	PLUG, SPARK(NGK DCPR6E)	4
		15412-92J10-000	FILTER, FUEL	1
		16510-61A33-000	FILTER ASSY, OIL WAKO	1
		55321-87J01-000	ANODE, PROTECTION	3
		17400-92J23-000	KIT, WATER PUMP REPAIR	1
		11265-87E10-000	GASKET, PROTECTION COVER	2
		15412-92J00-000	FILTER, FUEL	1
		16510-61A33-000	FILTER ASSY, OIL WAKO	1
DF100C-140B(G)	16500-99L00	55321-87J01-000	ANODE, PROTECTION	5
		09168-10022-000	GASKET(10X17X1.5)	2
		09168-12012-000	GASKET(12.5X20X2.5)	1
		09204-03003-000	PIN	1
		09280-22019-000	O RING(D:1.9, ID:21.8)	3
		09482-00649-000	PLUG, SPARK(LKR6E)	4

MODEL YEAR	KIT PART NUMBER	PART NUMBER	PART NAME	QTY
DF200A(P)/175AP/150AP ('15-)	16500-96L00	17400-96J04-000	KIT, WATER PUMP REPAIR	1
		09168-10038-000	GASKET, DRAIN PLUG	2
		09168-12012-000	GASKET(12.5X20X2.5)	1
		09204-03003-000	PIN	1
		09280-22019-000	O RING(D:1.9, ID:21.8)	5
		09482-00649-000	PLUG, SPARK(LKR6E)	4
		15412-92J00-000	FILTER, FUEL	1
		16510-96J11-000	FILTER ASSY, OIL	1
		55321-87J01-000	ANODE, PROTECTION	6
		17400-93J06-000	KIT, WATER PUMP REPAIR	1
DF200(225)/250 ('11-)	16500-93J02	09168-10038-000	GASKET, DRAIN PLUG	2
		09168-12012-000	GASKET(12.5X20X2.5)	1
		09204-03003-000	PIN	1
		09280-22019-000	O RING(D:1.9, ID:21.8)	7
		09482-00427-000	PLUG, SPARK(NGK, BKR6E)	6
		15412-93J10-000	FILTER ASSY, FUEL	1
		16510-96J11-000	FILTER ASSY, OIL	1
		55320-94910-000	ANODE SET, CLAMP BRACKET	1
		55321-87J01-000	ANODE, PROTECTION	7
		17400-98J06-000	KIT, WATER PUMP REPAIR	1
DF250A/300A/250S ('11-)	16500-98J03	09168-10038-000	GASKET, DRAIN PLUG	2
		09168-12012-000	GASKET(12.5X20X2.5)	1
		09204-03003-000	PIN	1
		09280-22019-000	O RING(D:1.9, ID:21.8)	7
		09482-00427-000	PLUG, SPARK(NGK, BKR6E)	6
		15412-93J10-000	FILTER ASSY, FUEL	1
		16510-96J11-000	FILTER ASSY, OIL	1
		55320-94910-000	ANODE SET, CLAMP BRACKET	1
		55321-87J01-000	ANODE, PROTECTION	8
		17400-87M01-000	KIT, WATER PUMP REPAIR	1
DF350A/325A/300B ('23-) MD	16500-87M02	09168-10038-000	GASKET, DRAIN PLUG	3
		09168-12012-000	GASKET(12.5X20X2.5)	1
		09204-03003-000	PIN	1
		09280-22019-000	O RING(D:1.9, ID:21.8)	7
		09482-00642-000	PLUG, SPARK(NGK, ILZKR7D8)	6
		15412-93J10-000	FILTER ASSY, FUEL	1
		16510-96J11-000	FILTER ASSY, OIL	1
		55320-94910-000	ANODE SET, CLAMP BRACKET	1
		55321-87J01-000	ANODE, PROTECTION	8
		55321-93J50-000	ANODE, PROTECTION	4
58551-98L00-000	STOPPER, FRONT PROPELLER NUT	1		

The following maintenance kits are also available.

MODEL YEAR	KIT PART NUMBER
DF2/2.5 ('06-'11)	17400-97820
DF4/5/6 ('02-'10)	17400-91860
DF4/5/6 ('11-)	17400-91830
DF9.9/15 ('11-'13)	17400-94810
DF20/25 V2 ('06-)	17400-95873
DF25/30 ('01-'10)	17400-89823
DF40/50 ('06LATE-'10)	17400-87823
DF60 ('09LATE-'09END)	17400-99853
DF60/70 ('07)	17400-99872
DF60/70 ('08-'09EARLY)	17400-99862
DF70A/80A/90A ('09-'20MY)	17400-87814
DF100/115 ('10-'12)	17400-92843
DF100A/115A/140A ('13-)	17400-92824
DF140 ('10-'12)	17400-92853
DF150/175 ('06-)	17400-96825
DF325A/350A ('18-'22)	17400-98876



FURUNO FishHunter™ Drive

FishHunter™ Drive delivers all-new control features for boaters utilizing Suzuki outboard models driven by the Furuno NAVipilot-300 Autopilot. These new features offer enhanced autopilot controls for precise navigation of routes and advanced fishing features for anglers while jigging, or trolling.

Applicable Models: ALL SPC models*1
(DF350AMD/300BMD*2, DF350A/325A/300B, DF300AP/250AP, DF250AUN, DF200AP/175AP/150AP, DF140BG/115BG)
*1 Gateway is required.
*2 Point Lock™ function is not available.



Speed Control

The boat will maintain a preset speed by adjusting engine RPM.



Route Smoothing™

Automatically controls the speed at waypoints for smooth turns while navigating a designated route. On approach to the final waypoint, the boat will slow down and activate Point Lock™ automatically to hold on the destination.



Point Lock™*3

Allows the vessel to easily keep a fixed position by controlling the steering and shift, canceling the effects of wind and current.

*3 Rudder Angle Sensor is required.



SABIKI™ Lock

Expands upon the NAVipilot-300's SABIKI™ function by controlling both the steering and throttle to maintain stern direction, allowing the angler to focus 100% on jigging and other vertical fishing.



GATEWAY

By utilizing a gateway, it becomes possible to effectively operate a wide range of marine equipment.



34923-96L13-000

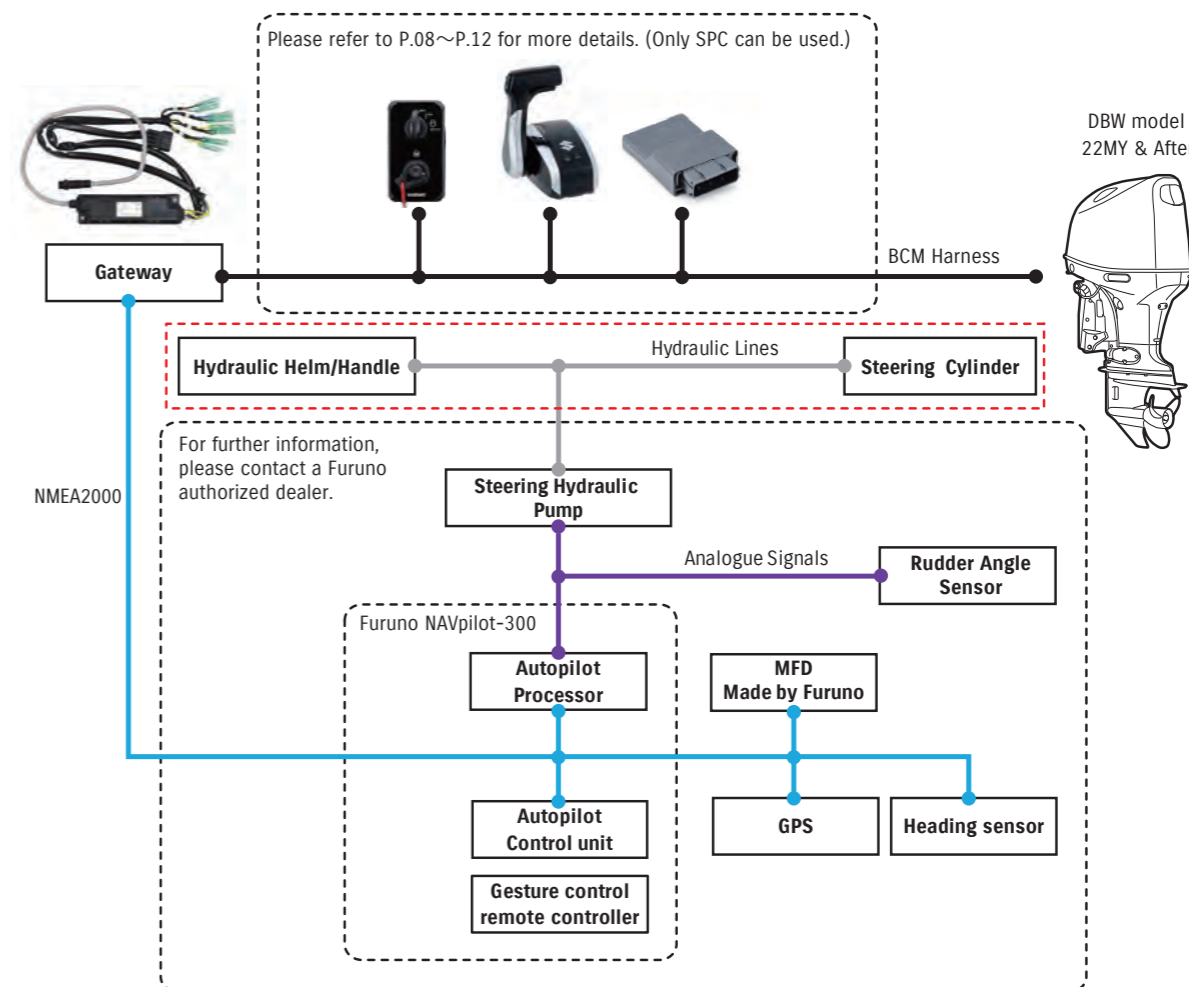
Applicable Display Brands and Functions

			Engine REV	Single Engine	Engine REV	Up to 4 engines	Engine REV	Up to 6 engines	Suzuki Diagnosis	Fuel Tank Sender Setting	QR code*1	Gauge Troll	Auto Trim Switch	KLS Encryption Key Input	FishHunter Drive**
Raymarine	Axiom Series	Lighthouse OS 4.1 or Later	○	○			○								
Furuno	GP-1*71F	V5.0 or later	○	○			○	○	○	○	○	○			
	TZTXL Series	V25.11 or later	○	○	○	○	○	○	○	○	○	○			

*1 QR Code is a registered trademark of DENSO WAVE.

*2 GP and TZTXL series display the mode and offer operation of some functions.

Connection Diagram for FishHunter™ Drive



SUZUKI DIAGNOSTIC SYSTEM MOBILE PLUS



The Suzuki Diagnostic System Mobile Plus (SDSM+) is an app that combines the existing functions of the former SDSM app with new, unique features to support our customer's marine life and experience.



Website address:
https://www.globalsuzuki.com/marine/sdsm_plus/



Click QR code to homepage

What can SDSM+ Do?

1. Plan a boat trip with the forecast
 2. Inspect boat and outboard motor in advance
 3. Acquire engine data
- *The SDSM+ app is subject to updates and changes.
Images on this catalogue may differ from the actual screen.

You can have more fulfilling marine experiences with SDSM+.

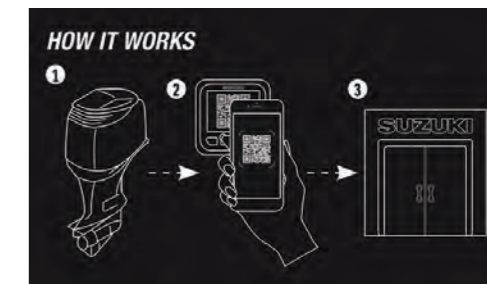
*The SDSM+ is a free app. SMG4 is required to access engine data.

How to get the engine data.

Two options for you to get the engine data.

1. Using the QR code*

- The outboard will convert engine data into a QR code* displayed on the SMG4.
- Open the app and scan the QR code. The app will receive the engine data and automatically attach it to an e-mail.
- You can send the e-mail to your nearby dealer to shorten the maintenance time.



*DENSO WAVE owns the rights of the name and the logo of QR code.

2. Using the Bluetooth® unit

We have newly added the Bluetooth function this year. You can obtain ENGINE DATA via Bluetooth with the SUZUKI VERATRON GO PLUS+. (Android app is already released, and iOS app will be available from January 2026.)



SUZUKI VERATRON GO PLUS+

Part number : B00193301
Function : GPS, Clock, Speed, and all data available on the NMEA 2000® network
For more information, please visit <https://veratron.com/>.

SDSM+ Plays a Key Role in SYNCRO EYE

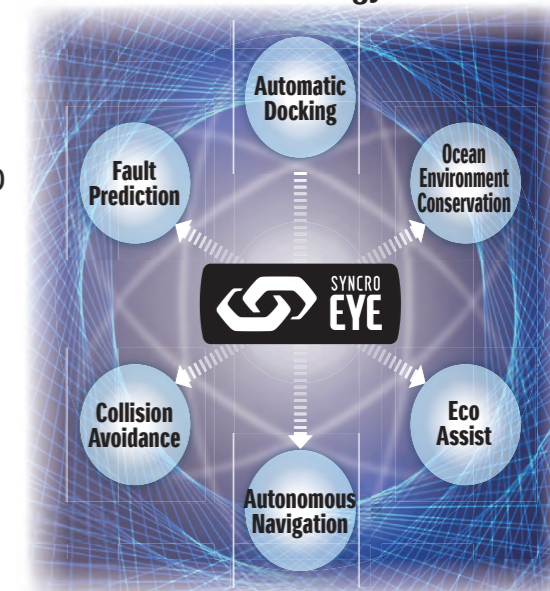


SYNCRO EYE, developed by Suzuki, integrates key functions like automatic docking, fault prediction, collision avoidance, and autonomous navigation to enhance boat safety and comfort.

Paired with the SDSM+ app, it allows easy trip planning and engine checks for safer, more efficient boating.



Suzuki's Technology Vision



SYNCRO EYE is the innovative technology shaping the future of marine life.

*Bluetooth® is a registered trademark of Bluetooth SIG, Inc.
*NMEA 2000® is a registered trademark of the National Marine Electronics Association.

